

## AMUSEMENTS.

### THEATRES—MUSIC HALLS—CINEMAS—SPORTS AND GAMES.

**L**ONDON is well provided with facilities for indoor entertainment, but, from a visitor's point of view, is sadly lacking in outdoor amusements.

### THEATRES.

Evening performances usually begin at 8, 8.15 or 8.30, and terminate about 11 p.m. Matinées, beginning at 2, 2.15 or 2.30, are usual at most houses on at least three days a week. For details see daily newspapers. Seats for the better parts of the house should be booked in advance, either at one of the Agents or Libraries, or by wire or telephone. It frequently happens that Agents, owing to their advance bookings, have better seats for disposal than can be secured at the box offices. The price of seats usually includes the entertainments tax. For the cheaper (unreserved) seats it is necessary to wait in the *queues*, which, in the cases of popular performances, often begin to form hours before the doors are opened. The sketch map on p. 49 shows the situation of most of the West End houses, and the nearest railway stations.

	SITUATION.	NATURE OF PERFORMANCE.
Adelphi .....	410, Strand, W.C.2 .....	Musical comedy, etc. ....
Aldwych .....	Aldwych .....	Drama, comedy, etc. ....
Ambassadors' ....	West Street, Shaftesbury Avenue	Drama, comedy, etc. ....
Apollo .....	Shaftesbury Avenue, W.C.1 ...	Comic opera, comedy .....
Comedy .....	Panton Street, Haymarket, S.W.1	Comedy .....
Court .....	Sloane Square, S.W.1 .....	Comedy, society plays, etc. ..
Covent Garden (see under Royal Opera House)		
Criterion .....	Piccadilly Circus, W.1 .....	Comedy, society plays, etc. ..
Daly's .....	Cranbourne Street, Leicester Square, W.C.2	Musical comedy, comic opera, etc.
Drury Lane .....	Catherine Street, Strand, W.C.2.	Drama, Pantomime, etc. ....
Duke of York's ...	St. Martin's Lane, W.C.2.....	Comedy, drama, etc. ....
Gaiety .....	Strand, W.C.2 .....	Musical comedy, etc. ....
Garrick .....	Charing Cross Road, W.C.2 ...	Comedy, society plays, etc. ..
Globe .....	Shaftesbury Avenue, W.1 .....	Drama, comedy, etc. ....
Haymarket .....	Haymarket, S.W.1 .....	Comedy, drama, etc. ....
His Majesty's .....	Haymarket, S.W.1 .....	Comedy, drama, etc. ....

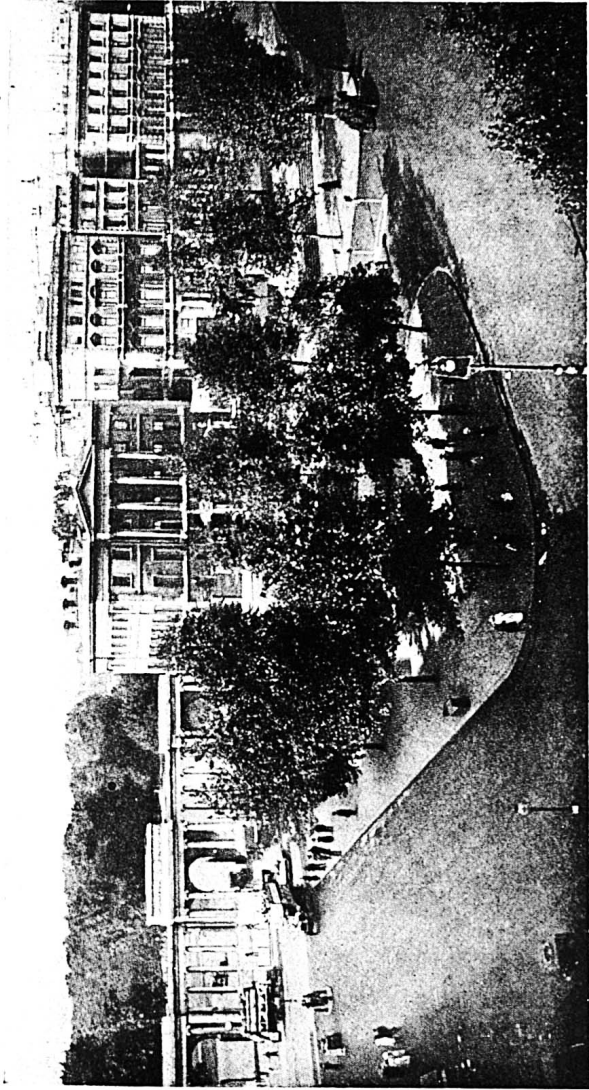
## THEATRES

	SITUATION.	NATURE OF PERFORMANCE.
<b>Kingsway</b> .....	8, Great Queen Street, Kingsway, W.C.2	Drama, comedy, etc. ....
<b>Little</b> .....	17, John Street, Adelphi, W.C.2	"Grand Guignol," Revue, etc.
<b>Lyceum</b> .....	Wellington St., Strand, W.C.2..	Popular drama, Christmas pantomime.
<b>Lyric</b> .....	29, Shaftesbury Avenue, W.1 .	Comic opera .....
<b>New</b> .....	St. Martin's Lane, W.C.2.....	Comic opera, society plays, etc.
<b>New Oxford</b> .....	Junction of Oxford Street and Tottenham Court Road.	Drama, musical comedy, etc...
<b>Playhouse</b> .....	Northumberland Avenue, W.C.2	Comedy, society plays, etc. ..
<b>Prince's</b> .....	Shaftesbury Avenue, W.C.2 ...	Drama, etc. ....
<b>Prince of Wales</b> ...	Coventry Street Piccadilly, W.1	Musical comedy .....
<b>Queen's</b> .....	Shaftesbury Avenue, W.1 .....	Society plays, drama, etc. ...
<b>Royal Opera House</b>	Covent Garden, W.C. ....	Grand opera, fancy dress balls, concerts, high-class films [etc.
<b>Royalty</b> .....	73, Dean Street, Shaftesbury Avenue, W.1	Drama, comedy, etc. ....
<b>St. James's</b> .....	King Street, St. James's .....	Society plays, romantic drama, etc.
<b>St. Martin's</b> .....	West Street, Cambridge Circus, W.C.2	Drama, comedy, etc. ....
<b>Savoy</b> .....	Strand, W.C.2 .....	Musical comedy, society plays, etc.
<b>Scala</b> .....	Charlotte Street, Tottenham Court Road.	Drama; also used for cinema films.
<b>Shaftesbury</b> .....	Shaftesbury Avenue, W.1 .....	Musical comedy, burlesque, etc.
<b>Strand</b> .....	Aldwych .....	Drama, comedy, farce, etc. ..
<b>Vaudeville</b> .....	404, Strand, W.C.2 .....	Comedy, burlesque, etc. ....
<b>Winter Garden</b> ....	Drury Lane, W.C.2 .....	Musical comedy, etc. ....
<b>Wyndham's</b> .....	Charing Cross Road, W.C.2 .....	Comedy, society plays, etc. ..

## Variety Theatres, Music Halls, etc.

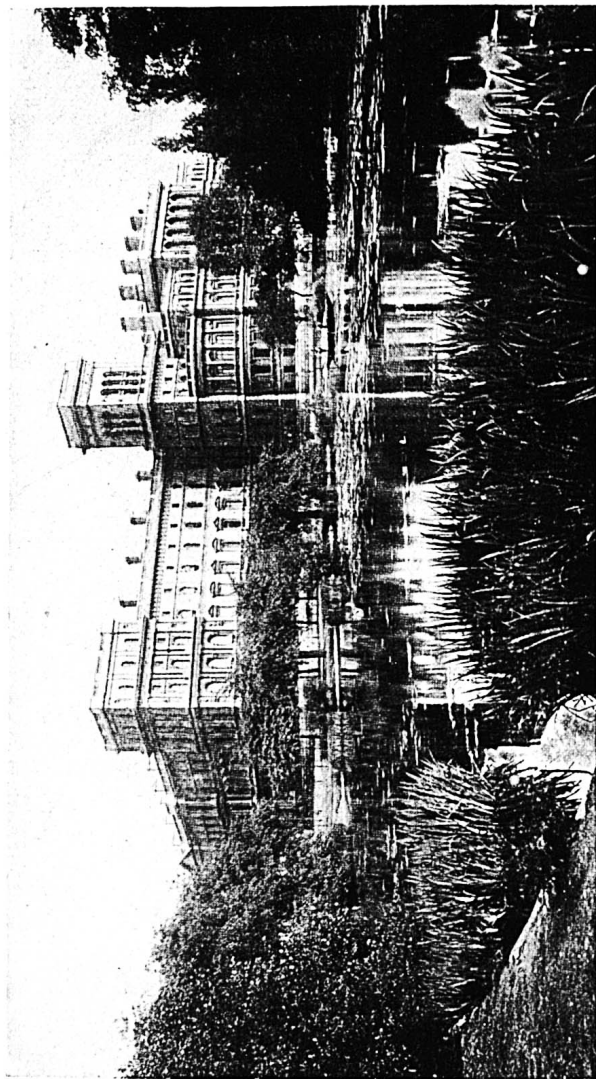
Matinées generally at 2 or 2.30, evening performances at 7.45. In many houses two performances a night are given. Smoking is permitted. Prices are generally lower than in theatres for the corresponding class of seat.

	SITUATION.	NATURE OF PERFORMANCE.
<b>Alhambra</b> .....	Leicester Square, W.C.2 .....	Ballets, varieties, etc.....
<b>Coliseum</b> .....	St. Martin's Lane, near Charing Cross, W.C.2	Varieties .....
<b>Empire</b> .....	Leicester Square, W.C.2 .....	Revue, etc. ....
<b>Hippodrome</b> .....	Cranbourne Street, Leicester Square, W.C.2	Revue, pantomime, etc. ....



HYDE PARK CORNER,

[Rotary Series.



*Photochrom Co., Ltd.,*

THE FOREIGN OFFICE, FROM ST. JAMES'S PARK.

*London.*

	SITUATION.	NATURE OF PERFORMANCE.
Holborn Empire ..	242, High Holborn, W.C.2 ....	Varieties .....
Maskelyne's .....	St. George's Hall, Langham Place, W.	Mystery, etc. ....
Palace .....	Cambridge Circus, Shaftesbury Avenue, W.1	Revue, Cinema, films, etc....
Palladium .....	Argyll Street, Regent Street, W.1	Varieties .....
Pavillon .....	Piccadilly Circus .....	Varieties .....
Victoria Palace ...	Victoria Station, S.W.1 .....	Varieties .....



Underground Railways and Stations shown thus --○--

### London Theatres, etc., and their Situation.

Generally speaking, Leicester Square and Piccadilly are the most convenient Tube stations for Theatre-land.

- |              |                  |                  |
|--------------|------------------|------------------|
| 1. Adelphi.  | 4. Ambassadors'. | 7. Comedy.       |
| 2. Aldwych.  | 5. Apollo.       | 8. Covent Garden |
| 3. Alhambra. | 6. Coliseum.     | Opera House.     |

- |                     |                    |                       |
|---------------------|--------------------|-----------------------|
| 9. Criterion.       | 21. Kingsway.      | 32. Playhouse.        |
| 10. Daly's.         | 22. Little.        | 33. Prince of Wales'. |
| 11. Drury Lane.     | 23. Stoll Picture  | 34. Prince's.         |
| 12. Duke of York's. | Theatre.           | 35. Queen's.          |
| 13. Empire.         | 24. Lyceum.        | 36. Royalty.          |
| 14. Gaiety.         | 25. Lyric.         | 37. St. James's.      |
| 15. Garrick.        | 26. Winter Garden. | 38. Savoy             |
| 16. Globe.          | 27. New.           | 39. Shaftesbury.      |
| 17. Haymarket.      | 28. Oxford.        | 40. Strand.           |
| 18. Hippodrome.     | 29. Palace.        | 42. Vaudeville.       |
| 19. His Majesty's.  | 30. Palladium.     | 43. Wyndham's.        |
| 20. Holborn Empire. | 31. Pavilion.      |                       |

### Suburban Theatres.

Nearly every district of importance has one or more houses of entertainment. Some of these equal the West End theatres in comfort and class of performance, and the prices are considerably lower. We have labelled as "suburban" all theatres not in the proximity of Charing Cross.

- |  |  |
|--|--|
| <b>Borough Theatre and Opera House</b> , High Street, Stratford, E.15. | <b>King's</b> , Hammersmith, W.6.                                  |
| <b>Britannia</b> , 115-17, Hoxton Street, N.1.                         | <b>Lyric Opera House</b> , Hammersmith, W.                         |
| <b>Brixton</b> , Brixton, S.W.   | <b>Pavillon</b> , 193-5, Whitechapel Road, E.1.                    |
| <b>Broadway</b> , New Cross Road, S.E.14.                              | <b>Regent</b> , 37-43, Euston Road (opposite St. Pancras Station). |
| <b>Elephant and Castle</b> , New Kent Road.                            | <b>"Old Vic,"</b> 131, Waterloo Road, S.E.1.                       |
| <b>Everyman</b> , Hampstead.   | <b>Wimbledon</b> , Merton Road, S.W.                               |
| <b>Kennington</b> , Kennington, S.E.11.                                |  |

### Suburban Music Halls.

It is impossible to mention all of these. Prices range from 6d. to 5s., plus entertainments tax. In many cases there are two performances nightly.

- |  |  |
|--|--|
| <b>Alexandra Theatre</b> , Stoke Newington.                    | <b>Islington Empire</b> , High Street, Islington, N.1.         |
| <b>Balham Hippodrome</b> , Balham Hill, S.W.12.                | <b>Kilburn Empire</b> , High Road, Kilburn.                    |
| <b>Camberwell Palace</b> , Camberwell, S.E.5.                  | <b>Lewisham Hippodrome</b> , Catford, S.E.6.                   |
| <b>Cambridge</b> , 136, Commercial Street, E.1.                | <b>Metropolitan</b> , 267-9, Edgware Road, W.2.                |
| <b>Canterbury</b> , 143, Westminster Bridge Road, S.E.1.       | <b>New Bedford</b> , Camden Town, N.W.                         |
| <b>Chelsea Palace</b> , King's Road, S.W.1.                    | <b>New Cross Empire</b> , New Cross Road.                      |
| <b>Collins's</b> , 10 and 11, Islington Green, N.1.            | <b>Putney Hippodrome</b> , Putney, S.W.15.                     |
| <b>Croydon Empire</b> , Croydon, S.E.19.                       | <b>Richmond Hippodrome</b> , Richmond.                         |
| <b>Empire</b> , 95, Mile End Road, E.1.                        | <b>Shepherd's Bush Empire</b> .                                |
| <b>Finsbury Park Empire</b> , Finsbury Park, N.4.              | <b>South London Palace</b> , London Road, S.E.                 |
| <b>Granville Theatre of Varieties</b> , Broadway, Fulham, S.W. | <b>Stratford Empire</b> , Broadway, Stratford                  |
| <b>Hackney Empire</b> , Mare Street, Hackney.                  | <b>Surrey Vaudeville</b> , Blackfriars Road, S.E.1.            |
| <b>Hammersmith Theatre of Varieties</b> .                      | <b>Willesden Hippodrome</b> , near Willesden Junction, N.W.10. |
|  | <b>Woolwich Hippodrome</b> , Woolwich, S.E.18.                 |