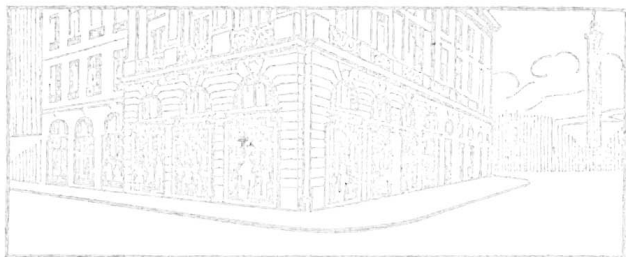


Alphabetical
INDEX
of
PRACTICAL
Information





The uniform mansions of the Place Vendôme were constructed by Mansart. Until 1860, it was a quiet aristocratic place, Aine-Montailé was one of the first fashion establishments to open a shop in its immediate neighbourhood, at the corner of rue St.-Honoré and the Place Vendôme, No. 1.

and since that time

AINE-MONTAILLÉ

has always been considered as one of the most reliable dressmaking and millinery houses in Paris, where one is sure to find models of the *surest taste* at very reasonable prices.



Aine-Montailé has 5 shops

1 Place Vendôme in Paris

Tél.: Gutenberg 12—94

27—29 Faubourg St. Honoré —

(mourning dresses)

7 Square Mérimée at Cannes

(in Winter)

2 Place du Revard at Aix les Bains

(in Summer)

500 Fifth Ave. New-York

Academy (refer to Prismatic Paris).
Alliance Francaise (see French courses).

AMERICAN AND BRITISH ORGANIZATIONS.

American Embassy (Chancellerie), 5 rue de Chaillot
American Consulate-General, 1 rue des Italiens (9e);
Central 05.51.

American Passport Bureau, 18 rue de Tilsitt (17e);
Wagram 54.31.

American Hospital of Paris, 54 rue Chauveau, Neuilly-sur-Seine, receives visitors daily from 2 to 5 p.m.;
Wagram 69.62. Hospital bureau, 24 rue Caumartin (9e),
Room 19; Louvre 11.90.

American Library in Paris, Inc., 10 rue de l'Elysée (8e).
Open weekdays 10 a.m. to 10 p.m.; on Sundays 2 p.m. to
10 p.m.; Elysees, 58.84. This important institution now
under management of Dr. Johnston will be presented in
a most developed way in Prismatic Paris.

American Red Cross, 10 rue de l'Elysée (8e).

American Joint Distribution Committee, 2 rue Lyautey
(16); Auteuil 23-14 and 23-15.

American Aid Society, 10 rue de l'Elysée (8e). Elysees
58-84.

American Art Association, 6 rue Joseph-Bara (5e).

American Medical Association in Paris, Dr. James
Evans, secretary, 6 rue Huysmans, Paris.

American Women's Club, 27 Bould Malesherbes. Tel:
Elysees 65-87. Information Bureau. Lunch, tea and read-
ing rooms. Frequent concerts, lectures, receptions. Miss
Jessie Patterson, President. Mrs. Charles Prince, Mrs.
Henry Conkling, Vice-Presidents. Mrs. F. W. Beekman,
Chairman. Baronne Hollinguer, Treasurer. Mrs. A. N.
Connell Jr., Secretary. Miss M. M. Greenough, Assistant
Treasurer. Mrs. Paul B. Badger, Assistant.

American University Women's Club, 4 rue de
Chevreuse. Tel: Fleurus 12-58.

American Club of Paris, 32 rue Taitbout. Tel: Central
24-14. Weekly luncheons at the Café Cardinal Corner
Boulevards and Rue Richelieu.

American Chamber of Commerce, 32 rue Taitbout.
Tel: Bergere 44-81.

American Legion, 10 rue de l'Elysee. Tel: Elysee 59-19.

American Masonic Headquarters, 10 Ave Victor Em-
manuel III. Tel: Elysees 27-57.

American University Union, 173 Bould St-Germain,
from 9 to 12 and 2 to 6. Tel: Fleurus 23-24.

American Students Club, 107 Bould Raspail (1 to 11
p.m. daily except Sunday).

Are you looking for
an apartment?
a house in the country?
an old mansion?

Apply to

MME. P. BARRAULT

15 Bould des Italiens.

Tel.: Louvre 52-15 Tel.: Louvre 52-17

 " " 52-16 " " 52-18.

 Tel.: Louvre 52-19

Tel.-Adr.: BARRAULT - IMMECLAIR

Who will give your desires her personal attention.

Her interesting bargains and the quality of her services have won Madame Barrault the lasting confidence of her many americans and English clients who have relied on her experience.

Not an agency — a personal adviser.

All the apartments and houses offered have been inspected and their conditions carefully studied by Madame Barrault herself.

Amis des Artistes, 42 Faubg. Poissonnière. Tel: Central 29-11.

Anglo-American Press-Club, 224 rue de Rivoli.

American Graves Registration Service. 8 Avenue d'Iéna. Tel: Passy 83-19.

Athenaeum (art and music students). 15 Rue Louis le Grand.

Benjamin Franklin Post No 605, Veterans of Foreign Wars, 8 avenue d'Iéna (16e); Passy 83-85.

Blind Relief War Funds. 16 Avenue Kléber. Tel: Passy 57-14.

British Club, 8 Boulevard Malesherbes, Central 63-05.

British Chamber of Commerce, 6 Rue Halévy, Guten. 49-20. From 10 to 6 p.m.

British-American Y. W. C. A., 24 Rue d'Anjou.

British Embassy Church House, 70 Rue Jouffroy. Weekly during winter.

British Charitable Fund, 57 Avenue Hoche.

British passport Office, 3 Rue Chaillot. Tel: Passy 34-18.

College des Etrangers (formerly College des Etats-Unis), 24 Rue Caumartin (8e); Louvre 15-92.

English Club (social), 3 bis Chaussee d'Antin.

English Debating Society. Michelet Amphitêatre at the Sorbonne. On Mondays.

Fatherless Children of France, 57 Rue de Babylone, Tel: Saxe 81-05.

Federal Council of Churches in America, 8 Rue de la Victoire. Tel: Central 95-75.

Franco-American Social Settlement, 40bis rue du Pré-Saint-Gervais (19e); Combat 04-66. L'Aide pour l'Enfance, 6 rue Clavel (19e); Nord 57-91.

France-Amerique, 82 Ave des Champs-Elysées. Tel: 84 Elysées 51-00.

Fraternité Franco-Américaine, 57 Rue de Babylone

French-American Welfare, 16 Avenue Wagram. Tel: Elysee 14-58. A Catholic institution-Sitting rooms, tea rooms, Lectures on Saturday afternoon. Under Management of Comtesse de Sayve. The branch at 11 rue Ferou, near the Luxembourg offers girl students a friendly atmosphere and a home.

French Heroes Lafayette Memorial Fund, 28 Rue Marbeuf. Tel: Passy 84-46.

Friends of American Society, 53 Rue de Rivoli.

The Girl's Friendly Society, 50 Avenue d'Iéna. Gatherings on Sundays, 4 p.m.

Harvard Club of Paris, 44 Rue Taitbout.

Hospital (British), 72 Rue de Villiers, Levallois Perret. Consultation on Monday and Friday, at 9.30 a.m. Tel: Wag. 52-58.

Hospital (Private English), 6 Rue de Chateaubriand. Tel: Elys. 39-19.

Hospital (Cottage) under management of Lady Doctor, 95 Boulevard Arago. Tel: Gobelins 02-98.

International Y. M. C. A., 46 Rue de Provence. Tel: Trud. 58-60.

International Guild for Students, 6 Rue Sorbonne.

Imperial Club (social), 6 Boulevard de Capucines.

Island Club (Boating and Tennis), Neuilly-sur-Seine.

Knights of Columbus, 15 Boulevard des Italiens. Tel: Louvre 52-15.

Lyceum Club (ladies Club), 4 Rue de Penthièvre.

Mc Call Mission, 1 Rue Pierre Lévis.

Moose Club (Social), 5 Boulevard Malesherbes.

New-York School of fine and applied art, 9 Places des Vosges. Tel: Archives 56-38.

Old Colony Club. Hotel du Rhin, Place Vendôme.

Reparations Commission, 7 Rue de Tilsitt. Tel: Elys. 57-14.

Roman Catholic homes for English speaking governesses, 5 Rue Lord Byron.

Salvation Army, 76 Rue de Rome. Tel: Wagram 77-10.

Sainte Genevieve's Club, 104 Rue de Vaugirard. — A club for English speaking Catholics in Paris. Lectures and music every Sunday evening.

Société des Foyers de l'Union Franco-Américaine, 115 Rue de Rome. Tel: Wagram 26-41.

Tuberculosis (Commission for the prevention of the), 3 Rue de Berri. Tel: Elys. 44-42.

Travellers' Club (International), 25 Avenue des Champs Elysées. Tel: Passy 48-32.

Victoria Home, 55 Boulevard de la Saussaye, Neuilly-sur-Seine. (For respectable English residents in reduced circumstances.)

Washington Lafayette, club 37 Rue de la Bienfaisance.

Women's Auxiliary of the American Legion, 10 Rue de l'Elysée (8e); Elysées 59-19.

Y. M. C. A. Headquarters, 15 Bould des Italiens. Tel: Louvre 52.15.

Y. W. C. A. American, 9 Rue Daunou. Louvre 46-73.

Arts (refer to Prismatic Paris).

Maison des Artistes, 53 Avenue Wagram, Tel.: Wagram 40-17.

Cooperative Restaurant: Open at noon and evening daily except holidays, Price of meal, 3,50, comprising: soup, meat and vegetable, extra vegetable, cheese or desert, quarter litre of wine and a portion of bread.

Exposition Galery: This galery is divided into seven square sections which may be rented together or separately by individuals or by groupes of artists, at the price of 10 francs per day per square; heating, lighting and watchman included.

Rooms for reading, correspondance and library. — **Medical and Pharmaceutical service.** — **Stenographic, music copying service** at very low rates. — **Legal counsel.** — **Concert and reunion hall.** — **Amphitheater and Lecture hall.**

Conversion of Dollars to Francs and Francs to Dollars.

14.60 = 6.849	17.10 = 5.847	19.60 = 5.102
14.65 = 6.825	17.15 = 5.830	19.65 = 5.089
14.70 = 6.802	17.20 = 5.813	19.70 = 5.076
14.75 = 6.779	17.25 = 5.797	19.75 = 5.063
14.80 = 6.756	17.30 = 5.780	19.80 = 5.050
14.85 = 6.734	17.35 = 5.763	19.85 = 5.037
14.90 = 6.711	17.40 = 5.747	19.90 = 5.025
14.95 = 6.688	17.45 = 5.730	19.95 = 5.012
15.00 = 6.666	17.50 = 5.714	20.00 = 5.006
15.05 = 6.644	17.55 = 5.698	20.05 = 4.987
15.10 = 6.622	17.60 = 5.681	20.10 = 4.975
15.15 = 6.600	17.65 = 5.665	20.15 = 4.962
15.20 = 6.578	17.70 = 5.649	20.20 = 4.950
15.25 = 6.557	17.75 = 5.633	20.25 = 4.938
15.30 = 6.535	17.80 = 5.617	20.30 = 4.926
15.35 = 6.514	17.85 = 5.602	20.35 = 4.914
15.40 = 6.493	17.90 = 5.586	20.40 = 4.901
15.45 = 6.472	17.95 = 5.571	20.45 = 4.889
15.50 = 6.451	18.00 = 5.555	20.50 = 4.878
15.55 = 6.430	18.05 = 5.540	20.55 = 4.866
15.60 = 6.410	18.10 = 5.524	20.60 = 4.854
15.65 = 6.389	18.15 = 5.509	20.65 = 4.842
15.70 = 6.369	18.20 = 5.491	20.70 = 4.830
15.75 = 6.349	18.25 = 5.479	20.75 = 4.819
15.80 = 6.329	18.30 = 5.464	20.80 = 4.807
15.85 = 6.309	18.35 = 5.449	20.85 = 4.796
15.90 = 6.289	18.40 = 5.434	20.90 = 4.784
15.95 = 6.269	18.45 = 5.420	20.95 = 4.773
16.00 = 6.250	18.50 = 5.405	21.00 = 4.761
16.05 = 6.230	18.55 = 5.390	21.05 = 4.750
16.10 = 6.211	18.60 = 5.376	21.10 = 4.739
16.15 = 6.191	18.65 = 5.360	21.15 = 4.728
16.20 = 6.172	18.70 = 5.347	21.20 = 4.716
16.25 = 6.153	18.75 = 5.333	21.25 = 4.705
16.30 = 6.134	18.80 = 5.319	21.30 = 4.694
16.35 = 6.116	18.85 = 5.305	21.35 = 4.683
16.40 = 6.097	18.90 = 5.291	21.40 = 4.672
16.45 = 6.079	18.95 = 5.277	21.45 = 4.662
16.50 = 6.060	19.00 = 5.263	21.50 = 4.651
16.55 = 6.042	19.05 = 5.249	21.55 = 4.640
16.60 = 6.024	19.10 = 5.235	21.60 = 4.629
16.65 = 6.006	19.15 = 5.221	21.65 = 4.618
16.70 = 5.988	19.20 = 5.208	21.70 = 4.608
16.75 = 5.970	19.25 = 5.194	21.75 = 4.597
16.80 = 5.952	19.30 = 5.181	21.80 = 4.587
16.85 = 5.934	19.35 = 5.167	21.85 = 4.576
16.90 = 5.917	19.40 = 5.154	21.90 = 4.566
16.95 = 5.899	19.45 = 5.141	21.95 = 4.555
17.00 = 5.882	19.50 = 5.128	22.00 = 4.545
17.05 = 5.865	19.55 = 5.115	

The best changes rates are to be had at Expr-Inter.
2 Rue Scribe.

THE ONLY
newspaper in Europe
e d i t e d
by
Americans

The Chicago Tribune
DAILY NEWS AND THE **EVANGELIST** NEW YORK

Therefore
the only
American Newspaper
in
Europe



ASK YOUR HOTEL CONCIERGE
TO SEND IT TO YOUR ROOM
EVERY DAY

Athletics page 56

Automobiles. — Private Cars for use about town and for touring can be obtained from agencies by the mile or by the kilometer, and on the popular "Inclusive Tour Basis" — all expenses of the automobile and chauffeur, as well as hotels, meals, entrance fees, gratuities, etc., are covered in a bulk price.

Banks opened from 9 to 4 pm.

American Express Co., 11, Rue Scribe. — American International Cor., 2, Rue des Italiens. — Bank of Montreal, 17, Place Vendome. — Bankers Trust Co., 3, Place Vendome. — Barclay, 33, Rue du quatre-Septembre. — Cook, Thos & Son, 2, Place de la Madeleine. — Equitable Trust Co., Place Opera. — Guaranty Trust Co., 3, Rue des Italiens. — Internat. Trust Syndicate, 11, Rue Gaillon. — Irving National Bank, 22, Place Vendome. — Liberty National Bank of New-York, 4, Rue Auber. — London County & Westminster, 22, Place Vendome. — Lloyds Bank, 25, Rue de la Paix. — Malcolm, Jonald C., Investment Banker, 20, Place Vendome. — Morgan, Harjes and Co., Place Vendome. — National City Bank of N. Y., 39, Boulevard Haussmann. — Park Union Foreign Banking Corporation, 1, Rue Taitbout. — Royal Bank of Canada, 28, Rue du Quatre Septembre.

Bars page 46

Baths. Le Hamman. Turkish baths, 18, rue des Mathurins. Special entrance for ladies, 47 Bould Haussmann.

Bienvenue Francaise, Tel: Elysées 67-18, 33 Faubourg St-Honoré, in the building of the Union Interralliée Club, and under the Presidency of Marshall Foch. Visitors holding letters of recommendation from their embassies or well known institutions of their country will be able to meet there the most distinguished citizens of the country, and will be given access to private collections, studios of great artists, etc. which are not open to the public Mme Boas de Jouvenel is the active director.

Bois de Boulogne page 53

Books (refer to Prismatic Paris).

Boot black (St-Lazare Station (downstairs) and 6 Rue Caumartin (Olympia Entrance).

British organizations. Refer to American and British organizations.

Cabarets page 41

LOUIGI'S ELMANO'S BAR

4, Rue Edouard VII — Phone: Central 77-92

*THE FAVOURITE MEETING PLACE FOR AMERICANS
SPECIAL LUNCHEES FOR BUSINESSMEN*

**TEA-TANGO
OPEN ALL NIGHT**

Champagne, Wine page 35

Chemists (American and English specialties) Roberts, 5 rue de la Paix. Tel: Central 29-69, English Druggist, 62 Ave des Champs-Élysées. Tel: Elysées 22-52.

Churches. — Sunday service. — American Church., 21, Rue de Berri. Sunday service 11 am. — American Church (Holy Trinity), 23, av. Georges-V, 8.30, 10.30 am., 5.30 pm. Evensong 8 pm. — Baptist Church, 123, av. du Maine, Metro Denfert-Rochereau, 2.15. — British Embassy Church, 5, Rue d'Aguesseau . 8.30-10.30 & 8 pm. — Christ Church, 81, bd. Bineau, Neuilly. 8.30-10.30 am. & 6 pm. — Church of Scotland (Pres), 17, Rue Bayard, 10.30 am. & 8 pm. — First Church of Christ (scientist), 184, bd. Saint-Germain, 11.15 am. — New Jerusalem Church, 84, av. de Breteuil. — Second Church of Christ Scientist, 14, Rue Magellan, 11.15 am. — St. Joseph's Church (Cath), 50, av. Hoche, 7, 8, 9, 10, 11.30 u. 3.15. — St. Georg's Church, 7, Rue Auguste-Vacquerie, 8.30-10.30 am. u. 5.45 pm. — Wesleyan Methodist Church, 4, Rue Roquepine, 10, 11 am. u. 8 pm.

Cinema refer to : page 43

Decoration (see Prismatic Paris).

Dentists: Brille, J. M., D.D.S., 11 Rue Edouard-VII: Gut. 77-65. — Demarquette, D. D. S., 6, Rue de Port-Mahon (near Opera). — Javitt, S. M., 20, Rue de la Paix. Tel: Louvre 11-81. — Merrill, Dr. J. Rogers, 17, av. de l'Opera. Central 86-91. — Pinard, N. J. V., 20, Rue de la Paix. Tel: Louvre 11.80. — Trudeau, N., 15, bd. Malesherbes. Tel: Elysées 10-71.

Doctors. Borsch, L. (Oculist), 10, Rue de la Paix. Louvre 26-51. — Converse, G. M., 7, Rue Chaillot. Passy 38-80. — Gros, E. L., 23, av. du Bois-de-Boulogne. Passy 64-18. — Marville, H. B. de, 35, Rue Chaillot. Passy 61-34. — Robinson, L., 28, Rue de Ponthieu. Elysées 00.44. — Turner, R. H., 42, Rue de Villejust. Passy 62-79. — Viteman, A., 8, rue Bassano. Passy 69-90. — Wilson-Prévost C. (of New-York), 28, av. d'Iéna. Passy 12.97 (By Appointment).

Dressmaker: Aine-Montailié, Place Vendôme.

Events of the year page 15

Faubourg St-Germain (refer to Prismatic Paris).

French courses: Free courses at the Alliance Française, 101 Bould Raspail. Tel: Fleurus 05.39, provides foreigners with several series of courses, the most interesting of which are; — 1st. — a Complete course of French studies. — This course includes two terms. Winter term: from the 3d of November to the 28th of February; — Summer term: from the 1st of March to the 30st of June. — 2ndy. — A preparatory Course for the Faculties of French University. This Course, destined for the future students at French University, is given every year, during the months of September and October. — 3dly — Evening Classes, held from the 3d of October to the 30st of June. — For all information, please apply to Mr Robert Dupouez, 101, Boulevard Raspail.

Environs page 73

Golf page 59

Grocers: (English and American specialties) Bureau, 12 Rue de Sèze, near La Madeleine, Tel: Gutenberg 22.07. La Montagne's, 16 Chaussee d'Antin (Opera) Central: 50.18. Corcellet, 18 Ave de l'Opéra. Tel: Central 39.88. The renown of this place where all possible delicacies may be had, is traditional. As far back as the year 1821, the Almanach des Gourmands praises its products, and the epicures of that heroic period were not easily to be deceived. Since those days, the glory of Corcellet has in no way diminished. Its coffee has a merited world wide reputation.

Horses for sale. At the Tattersall, 10 Rue Pergolèse. Tel: Passy 39.38. Refer to riding for hire.

INFORMATIONS BUREAU: Enjoy Paris, Expr-Inter Agency 2 Rue Scribe.

Hospitals: American Hospital, 44 Rue Chauveau, Neuilly. 35 beds to be enlarged shortly. Tel. Wagram 96-08. Tram no 35 from the Madeleine Church. Information Bureau, 24, Rue Caumartin. Tel. Louvre 14 26. — Hertford (British) 72 Rue de Villiers, Levallois-Perret, Paris; Metro-station: Champerret and thence by Courbevoie tram. — 35 beds; Tel. Wagram 52-58.

Lectures: (refer to Prismatic Paris).

Librairies: (refer to Prismatic Paris).

Literary circles: (refer to Prismatic Paris).

Lost Property. Articles left in cabs, omnibuses and public buildings, are first taken to the office of the Commissaire de Police in the Arrondissement in which they are found, and if not claimed within 48 hours, are sent to the Bureau des Objets Trouvés, Préfecture de Police Caserne de la Cité, 1, Rue Lutèce (9 am to 5 pm.); articles left in the Subways are taken to the special Bureau des Objets Trouvés at the Palais Royal Station. If not claimed within 48 hours they also are sent to the Préfecture de Police, whither articles found in the street.

Maps Paris page 52

Bois de Boulogne page 52

Surroundings of Paris page 80

Olympics page 69

Messengers boys, 9, Rue Mont-Thabor. Tel: Central 28-55, Gutenberg 25-87. Rates: first ¼ hour 1,25,

Moving Pictures page 43

Music Halls page 45

LOUIGI'S ELMANO'S BAR

4, Rue Edouard VII — Phone: Central 77-92

*THE FAVOURITE MEETING PLACE FOR AMERICANS
SPECIAL LUNCHEES FOR BUSINESSMEN*

**TEA-TANGO
OPEN ALL NIGHT**

THE LARGEST SALE

of American Newspapers
≡ published in Europe ≡

The **New York Herald**

EUROPEAN EDITION

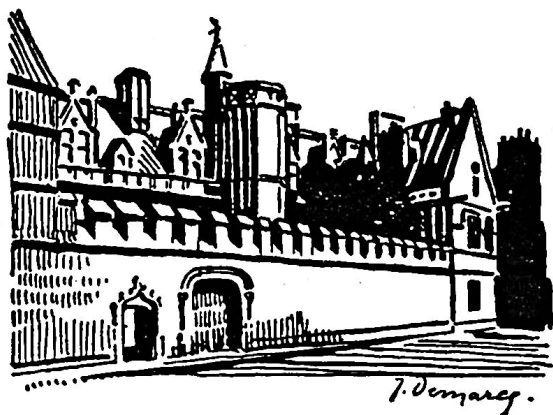
¶ Founded in Paris in 1887 by Mr. James GORDON-BENNETT, the "NEW YORK HERALD" — Paris Edition, became, in a few years the favourite of all Americans residing in France as well as all other European Countries and was equally appreciated by French Aristocracy and European Society Leaders.

¶ After the death of Mr. James Gordon-Bennett in 1920, the "Herald" became the property of Mr. Frank A. MUNSEY who, without entirely transforming it, gave to its Worldwide news service an importance which cannot be equalled. Its monthly supplements — Fashion Supplements — Arts Supplements — set standards in each subject and are highly valued by the masters of French dressmaking and art collectors themselves.

Its Financial Service is unique in France

PARIS-49 Avenue de l'Opéra-PARIS

Téléphone: GUTENBERG 04-28



MUSEUMS

A fee of one franc is now charged for admission on certain days. A fee is also to be given to the attendants.

Arc de Triomphe, Place de l'Etoile Daily 10 to 6.

Archives Nationales, 60, Rue des Francs-Bourgeois,
Week days 10 to 5.

Ecole des Beaux-Arts, 14, Rue Bonaparte, Sunday 1 to
5, Week days 10 to 4.

Bibliothèque Nationale, 58, Rue de Richelieu,
Sunday 10 to 4, Week days 9 to 4.

Bibliothèque Nationale (Museum), 58 Rue de Richelieu
10 to 4 Monday and Thursday on presentation
of cards delivered at the Secretariat.

Carnavalet Museum, 23, Rue de Sévigné,
Daily 10 to 4 Winter, 10 to 5 Summer, Tuesday
12.30 to 4; Closed Monday. Admission 1 fr.
except Sunday and Thursday.

Catacombs of Paris, Place Denfert-Rochereau,
1st and 3rd Saturdays of each month. Entr. 1 fr.

Cernuschi Museum, 7, Avenue Velasquez,
Sunday 10 to 5, Week days 10 to 4 or 5, Tues-
day 12 to 4 or 5. Closed Monday. Admission
1 fr. except Sunday and Thursday.

Château de Chantilly (Gare du Nord)
Daily 1 to 5, Thursday and Holidays (free);
Saturdays 2 frs.

Cluny Museum, Boul. St. Germain (entrance Rue du
Sommerard), Daily 10 to 4 or 5, Tuesday 1 to
4 or 5. Closed Monday.

- Colonne de Juillet, Place de la Bastille,
Daily 10 to 4 or 5.
- Conservatoire des Arts-et-Métiers, Square des Arts-
et-Métiers. Sunday 10 to 4, Tues., Wed., Thur.
and Satur. 12 to 4.
- Conservatoire de Musique, 14, Rue de Madrid,
Monday and Thursday 1.30 to 4. Closed July
1st to Oct. 1st.
- Eiffel Tower, Champ de Mars, Daily 10 to dusk.
- Fontainebleau Palace, Fontainebleau (Gare de Lyon)
Daily 11 to 4 Winter, 10 to 5 Summer.
- Galliéra Museum, 10, Avenue Pierre Ier de Serbie
Daily 10 to 4 or 5. Closed Monday.
- Gobelins Manufactory, Avenue des Gobelins,
Thursday 1 to 4.
- Guimet Museum, 7, Place d'Iéna,
Daily 12 to 4 or 5. Closed Monday.
- Hôtel de Ville (Salons), Place de l'Hôtel de Ville,
Week days 2 to 4. Tickets obtained on 1st floor,
staircase D, Court W, Rue de Rivoli entrance.
- Imprimerie Nationale, 87, Rue Vieille-du-Temple,
Thursday only at 2.30 p.m. promptly on presen-
tation of cards delivered by the Director.
- Invalides (Hôtel des) and Museums, Esplanade des
Invalides,
Sunday, Tuesday, Thursday 12 to 4 or 5, Wed.
entrance 1 fr., Friday during Summer only.
- Jardin d'Acclimation, Bois de Boulogne,
Daily 9 to dusk.
- Jardin des Plantes, Place Walhubert,
Daily 5 a.m. till dark.
- Ménagerie, Place Walhubert, Daily 10 to 4.
- Conservatories, Place Walhubert,
Thursday and Saturday 11 to 4.
- Natural History Collections, Daily 11 to 3, except
Monday and Wednesday with tickets.
- Louvre Museums and Galleries, Rue de Rivoli,
Daily 10 to 4, Friday 1 to 4. Closed Monday.
- Asiatic and Egyptian Museums, Rue de Rivoli,
Daily 11 to 4. Closed Monday.
- Mediaeval and Renaissance Sculpture, Rue de Rivoli,
Daily 12.30 or 1 to 4. Closed Monday.
- Modern Sculpture, Rue de Rivoli, Daily 12.30 or 1 to 4.
- Marine Museum, Rue de Rivoli,
Sunday and Thursday 1 to 4 or 5.
- Luxembourg Museum, 19, Rue de Vaugirard, Daily
10 to 5. Closed Monday all day and Tuesday
morning.

Malmaison Château, Rueil (Gare St. Lazare or tram from Porte Maillot),

Daily 10 to 4 or 6. Closed Monday.

Notre Dame Cathedral, Ile de la Cité,

Treasury and Towers, Week days 10 to 5.

Observatory, Avenue de l'Observatoire,

1st Saturday of each month 2 to 4. Admission on application to Director.

Palais de Justice, Boulevard du Palais,

Week days 12 to 4.

Conciergerie, Boulevard du Palais,

Thursday 9 to 5 on application to Préfet de Police (1, Rue de Lutèce, Bureau H 72).

Panthéon, Place du Panthéon,

Daily 10 to 4 or 5. Closed Monday.

Sainte Chapelle, Palais de Justice,

Daily 11 to 4 or 5. Closed Monday.

Saint Denis Basilica, Saint Denis (Gare du Nord),

Sunday 11 to 5.30, Services. Tombs. Daily 1 to 4 or 5 except during services. Tombs 11 to 5.30. Sacristy, Treasury and Crypt. Fee to guide.

Saint Germain Château and Museum, St. Germain-en-Laye (Gare St. Lazare).

Sunday, Tuesday, Thursday 10 to 4 or 5.

Sèvres Manufactory, Sèvres (Gare St. Lazare or Seine steamer from Pont Royal), Daily 12 to 4 or 5.

Week days, Workshops 2 to 4 or 5 on application to Chief Attendant.

Trocadéro Ethnographic Museum, Place du Trocadéro,

Sunday, Tuesday and Thursday 12 to 4 or 5.

Casts and Musée Cambodgien, Place du Trocadéro,

Daily 11 to 4 or 5. Closed Monday.

Aquarium, Parc du Trocadéro,

Daily 10 to 4 or 5. Closed Monday.

Versailles Palace and Gardens, Versailles (Gare St. Lazare, Gare Montparnasse, Gare des Invalides),

Daily 10 to 4 or 5. Closed Monday.



Newspapers: Chicago Tribune, rue Lamartine, 5. Trud. 50-02. Daily Mail, 5, rue Scribe, Gut. 34-19. Evening Telegram, 15, bd. des Italiens, Louvre 52-15. New-York Herald, av. de l'Opéra, 39, Gut. 04-28.

Fairchild's publications 2 Rue des Petits Pères. — Phone: Louvre 53-96. (Mr and Mrs Perkins, manager).

Olympics games page 67

PASSPORTS.

All foreigners who have remained in France more than two months must a carte d'identité before they will be given the French visa.

French. — Préfecture of Police, Ile de la Cité (Métro station: la Cité, rue Lutèce. Minimum fee 2 fr. 40; no visa required when returning direct to your native country. Hours: 9 am. to noon; 1 pm. to 5 pm.

American. — Passports Bureau, 18, rue Tilsitt (Etoile). Fee for foreigners 10.00 dollars. Hours: 10 am. to noon; 2 pm. to 4 pm.

Austrian. — Consulate-General, 23, bd. Beauséjour (Passy). Fee for Americans 10 \$. For British 27 fr. 50.

Belgian. — Consulate-General, 20, rue de Berri. There is no need for a Belgian visa to proceed but the French visa is required. Hours: 9 am to noon; 1 pm. to 5 pm.

British. — Passports Office, 3, rue Chaillot. Fee 10 shillings for single trip: 1 pound for visa valid for one year. For Americans the fee is ten dollars. Tel. Passy 34-18. Hours: 10 am. to noon; 2 pm. to 4 pm. Open every holiday and Sunday morning.

Yugo-Slavian. — 45 Avenue de Villiers. \$ 10. Hours 10 a. m. to noon.

Czecho-Slovakian. — Consulate-General, 1, avenue Charles-Floquet. Tel: Segur 17-20. Fee for Americans \$ 10. (for American husband and wife: 10 Dollars). Other nationalities 10 fr. gold. Hours: 10 to 12 am., 3 to 5 pm.

Danish. — 77 Avenue Marceau. 10 a. m. to noon. — 10 Dollars.

Finnish. — Consulate-General, 3, rue Nouvelle. Tel: Central 52.09. Fee for American 20 francs. Other nationalities 20 francs. Hours: 10 to 12 am., and 2 to 5 pm. everyday except Saturday.

German. — Consulate-General, 78 bis, rue de Lille. Tel: Fleurus 30-90. Fee for Americans \$ 10. Other nationalities 25 francs. Hours: 9 am. to 3 pm.

Greek. — Consulate-General, 4, rue Auguste-Vacquerie. Tel: Passy 73-20. Fee for Americans \$ 5. Other nationalities 28 fr. 45. Hours: 3.30 pm. to 5 pm.

Italian. — Consulate-General, 50, rue de Varenne. Tel: Fleurus 14-62. Fee for Americans \$ 10. Other nationalities 25 francs. Hours: 10 to 12 am.; 2 to 4 pm.

Luxembourg. — 11 rue d'Artois. 10 a. m. to noon and 2 p. m. to 4 p. m. 10 Dollars. — Tourist visa for six montha, beginning May 1st: 25 frs.

Netherland. — Consulate-General, 85, rue de Grenelle. Tel: Fleurus 10-69. Fee 3.75 florins (about Frs. 18). No visa for transit through Holland is required by British and U. S. travellers provided that the visa of the country of destination has been affixed to their passport and that they leave Holland within 8 days if travelling by sea or 2 days if travelling by land. Hours: 10 to 11.45 am.

Norwegian. — Consulate-General, 38 bis, rue Fabert. Tel: Segur 68-71. Fee for Americans \$ 10. Other nationalities 25 francs. Hours: 10 to 12 am.; 2 to 4 pm.

Polish. — Consulate-General, 43 rue Theophile Gauthier. Fee for Americans \$ 10. Other nationalities 100 francs. Hours: 10 to noon; 2 to 4 pm.

Portuguese. — Consulate-General, 9, rue Saint-Senoche. Fee for Americans \$ 1.35 for one person, 2.25 for family. Hours: 2 pm. to 4 pm.

Roumanian. — Consulate-General, 4 rue de la Banque. Fee for Americans \$ 10. Other nationalities 25 fr. Hours: 3 pm. to 5 pm.

Spanish. — Consulate-General, 5, cité Malesherbes. Tel: Trudaine 58-37. Fee for Americans 150 francs. Other nationalities 25 francs. Hours: 1 to 4 pm.

Swedish. — Consulate-General, 11, rue de la Pépinière. Tel: Gut. 28-18. Fee for Americans 100 francs (approximately). Other nationalities 11 fr. Hours: 10.15 to 12.15.

Swiss. — Consulate-General, 51, av. Hoche. Fee 18 fr. for single trip; 22 fr. for visa valid one year. Hours 2 to 4 pm. Americans and British require no visa.

Political life (refer to Prismatic Paris).

Photographers — among the best we note:

Rahma, 368 Rue. St. Honoré near Place Vendôme, Tel.: Gutenberg 59-18.

Manuel frères, 47 Rue Dumont d'Urville near the Etoile, Tel.: Passy 88-81.

POSTAL INFORMATION.

Cables. — Western Union Telegraph & Cable Co., 1, rue Auber.

Commercial Telegraph & Cable Co., 49, av. de l'Opéra.

All telegrams are accepted for transmission at all Post-Offices, no charge being made for the mention of the transmitting company. The rates, per word for New-York are 2.50, Chicago 3.10, San Francisco 3.80, London 0.50, Berlin 0.36, Vienna 0.43, Rome 0.36, Madrid 0.36, Stockholm 0.50, Amsterdam 0.39, Copenhagen 0.44 and Brussels 0.30.

Wireless Telegraph Rates. — The wireless telegraph rates are the same for every city mentioned above except Chicago and San Francisco, which rate is 4.215 and 5.295 per word, respectively.

Telegrams. — In France 15 centimes per word, minimum charge 1.20. England & United States same rates as Cables.

Telephones. — Most of the cafés have telephones at the disposal of their customers, and public telephones may be found in all principal post-offices. The fee is 0.25 for 3 minutes conversation, after connection has been established.

Communication is also obtainable with London, Birmingham, Brighton, Bristol, Dover, Folkestone, New Haven & Southampton.

The rate for three minutes conversation is 7.50 Frs. up to 7.30 pm. & 4.50 Frs. subsequently. For Brussels it is 3 Frs. till 7.30 pm. & 1.80 afterwards.

Rates (for France and colonies).

Postcards	0.25
Picture Post Card	0.10
Letters to 20 grammes	0.25
50 grs. and each additional	
50 grs.	0.15
Registered	0.35
Printed Matter 50 grs.	0.05
100 grs. & each add. 100	0.15

Rates (out of France).

Postcards	0.30
Letters	0.50
Each additionnal 20 grs.	0.25
Registered letter	0.50
Printed matter 50 grs.	0.10
Additionnal 50 grs.	0.10

Pneumatiques (2 hour mail service, during day). — Messages to any part of the Seine (Departement) and to Enghien in special enveloppe marked "pneumatique" Frs. 0.60 for 7 gr. or 1.20 for 15 grammes. A prepaid reply may besent for 1.20 (not weighing over 7 gr.). There is a special box for pneumatiques in all post-offices.

Parcel Post. — The limit of weight for England and U. S. A. is 5 kilos or 11 lbs and no dimension must exceed 60 centimeters. Forms must be filled in declaring nature and value of package.

Rates for Great Britain 1 kilo 360 gr. (3 lbs.)	3.90
From 1 kilo 360 gr. (3 lbs) to 3 kilos (7 lbs)	5.65
From 3 kilos (7 lbs) to 5 kilos (11 lbs)	6.90
Rates for U. S. A. and possessions, 1 kilo	3.50
From 1 kilo to 5 kilo	5.60

Parcels by Air Parcels may be sent from Paris to London by air. They should be handed before 11 a.m. to the Cie des Messageries Aériennes, 2, Rue Galilée; Instone Air Line, Hotel Savoy, 194 bis, Rue de Rivoli;

Parcel rates between Paris and London are Frs. 7.50 per kilo, up to 6 kilos; Frs. 6 per kilo from 6 to 25 kilos.

PRESSING

(American
Steam
Press)



near the *Gare St. Lazare* — 12 rue de l'Isly. Phone: Gutenberg 00-19.

near the *Faubourg St-Denis* 157. Phone: Nord 74-28.
in *Passy* — 33 rue de l'Assomption — Phone: Auteuil 38-23.

near the *Ternes* — 8 rue Demours — Phone: Wagram 17.58.

near place *Malesherbes* — 54 rue Jouffroy.

on *Left Bank* — 115 rue de Rennes. Phone: Fleurus 31-08.

The Parcel Post in France, though indirectly in charge of the Post Office, is managed by the Railway Companies and Forwarding Agents. Parcel Post rates are as follows: between France and the United States up to 1 kilo, Frs. 3.40; from 1 to 5 kilos, Frs. 5.50; between France and Great Britain up to 1 kilo 360 gr., Frs. 3.90; from 1 kil. 360 to 3 kilos, Frs. 5.65; up to 5 kil. Frs. 6.90.

REGISTRATION OF FOREIGNERS.

Every foreigner, who intends remaining in France for a period exceeding 2 months must, before the expiration of that time provide himself with a *Carte d'Identité*. To obtain a *Carte d'Identité*, you must first apply for a *Certificat de Domicile*, from your Concierge or the Manager of your hotel.

This certificate is then taken to the *Commissariat de Police* of your quarter, where it will be stamped; the porter or any French-speaking person can do this for you. No charge. This certificate, together with your passport and five photographs (taken without a hat) should then be taken to the *Préfecture de Police* (*Ile de la Cité*). Here you will be provided with a "*récépissé pour une demande de Carte d'Identité*" (which is a temporary identity card) on payment of a nominal charge.

The date for the delivery of your permanent card is usually 10 days after the receipt of your temporary card. A tax of ten francs must be paid at the Tax office in the quarter you reside. This tax when paid is stamped on your receipt (temporary card) which may then be taken to the Prefecture of Police and exchanged for your permanent card of Identity. A carte d'identité is the only paper required in France.

Restaurants. The temples of good-cheer. page 21.
Classified list according to location and prices. page 24.

Riding (Horses for hire).

Bartlett, 46 Avenue Montaigne. Tel: Passy 96.29.

Blum & Cie, 50 Rue St-Didier (Place Victor-Hugo).

Tel: Passy 43.25.

Howlett 4., 37 Rue de la Ferme, Neuilly St-James.

Tel: Neuilly 15.90.

Lamarez, 24 Rue Jacques Dulud, Neuilly s/Seine.

Tel: Neuilly 307.

Courault, 7 et 9 Rue Lauriston, Passy 91.94.

Manège de la Faisanderie, 26 Rue de la Faisanderie.

Rowing: page 58

Shopping in Paris page 47

School. Learn French and other languages in a short time at the **Berlitz School** of Languages, 31, Boulevard des Italiens (near the Opera). — Open from 9 a.m. to 9 p.m. Phone: Central 41-02 and Gutenberg 49-30.

Close to the Bourse

(Stock Exchange)



3 Rue de la Bourse

Le Caneton

restaurant

is reputed as one of the best and the most select in the quarter.

Spirit of Paris (refer to Prismatic Paris).

Sports page 55

Sporting Outfit Williams & Co, 1 & 3 rue Caumartin, (corner Boulevard de la Madeleine). Phone: Central 88-26 and Gutenberg 21-64, English spoken, All American and English trade marks. (Telegraphic address: Raquettes-Paris.)

Stamps may be had at tobacconist shops.

Swimming pools: Claridge Hotel, Avenue des Champs-Elysees. — Palais de la Natation, 26 rue de Chazelles, near the Parc Monceau (10 frs.) Tel: Wagram 64.25.

Tax'is. All Paris cabs are now provided with taximeters (automatic recording dials) indicating the fare due according to time spent or distance covered, based on the following tariffs:

First 600 metres or 4 1/2 minutes of occupancy	0 75
Each additional 200 m. or 2 minutes of waiting	0 20
Supplements. - For passing beyond the fortifications	1 00
Return fare indemnity for a cab dismissed outside of the fortifications, including the Bois de Boulogne & Bois de Vincennes, per kilometre	1 00
(These two supplements should not be paid in case the taxi is retained for the return.)	
For a vehicle hired after 10.30 pm. & before 6 am.	1 00
Each article of luggage carried next to driver	0 50
Tips of 10 %, or a little more.	

Single seat taxis have being launched recently in Paris, the fare for which is about half that of the ordinary type. When taking it, the register should read 0,60 centimes instead of 1 fr., as on the ordinary type, and then it increases at the rate of 10 centimes every 200 meters. Periods of waiting are charged for at 6 frs. an hour.

Tea rooms page 49

Tennis page 57

Tips. In hotels and restaurants it is usual to give about 10 Prozent of the bill as a tip.

Tobacco. The manufacture and sale of tobacco in France being carried on by the State, cigars, cigarettes and tobacco can only be bought from licensed dealers. Tobacco shops are very numerous in Paris, and one or more may be found in every important street. There are a few brands of English and American pipe tobacco and cigarettes to be had. Playing cards, stamps and bicycle tax-plates are also sold by tobacconists.

La Civette: Place du Théâtre-Français.

Le Khédive: Boulevard des Italiens (Métro: Opéra).

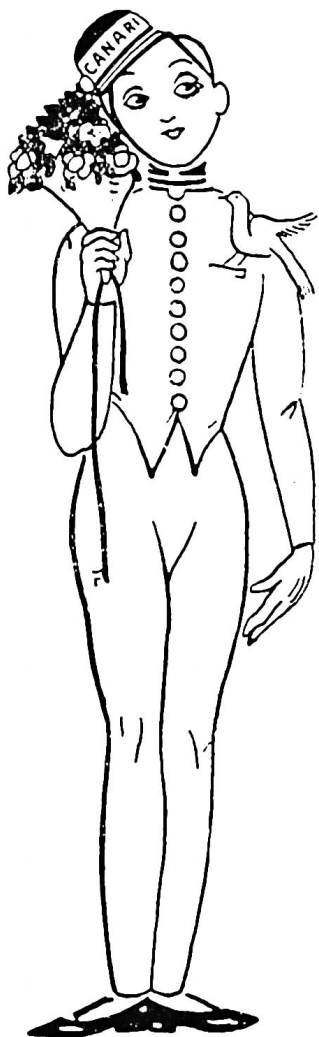
Tobacco-Shop of the Grand Hotel: Opposite the Grand Hotel, Boulevard des Capucines (Métro: Opéra).



*An inside view of the Canari a gay cabaret, just beneath the Palace,
8, Faubourg Montmartre.*

The
CANARI

a few steps



from the
Boulevards,

8
Faubourg
Montmartre

is one of

the
Gayest
places
in Paris

Dances, suppers etc.

Le PLAY, director
Tel.: Bergère 54-96.

Touring agencies. Exprinter 2 Rue Scribe Louvre 28-42.

Tuition. Learn French and other languages in a short time at the **Berlitz School** of Languages, 31, Boulevard des Italiens (near the Opera). — Open from 9 a.m. to 9 p.m. Phone: Central 41.02 and Gutenberg 49-30.

THEATERS (booking, programmes etc.)

For prices it is best to consult the lists posted up by the side of the booking offices. These usually open at 10. a. m.

At most of the theatres the performance starts at 8 or 8.30; in some cases, however it begins at 7.30 according to its length.

A plan will be found at the booking office, showing the exact position of the seat booked.

After the performance it is pretty hard to get a cab, unless already engaged, during one of the waits between acts, by the chasseur of the theatre.

The Metro can always be caught after the performance, even without too much hurry, but as the ticket windows are always very crowded, it is prudent to have a little booklet of tickets (carnet de billets) in one's pocket.

Opera. Tel: Louvre 07-05. Prices: Orchestre: 18.30 frs. — Balcon 19.30 — Baignoires 19 and 18 frs. — Firstclass: 21 and 19 frs. — Second class 18 and 14.70.

Opéra Comique. Tel: Gutenberg 05-76. A few steps from the Opera on the Boulevards (left).

Tickets from 23 to 14 frs.

Place Gaillon near Avenue de l'Opéra

DROUANT

One of the most popular of Parisian Restaurants

REPUTED CELLAR
PERFECT PARISIAN COOKING
AND SERVICE

Telephones : Central 35-30 and 35-31

Comédie Française. Tel: Gutenberg 02-22. Prices: Avant-scènes 25 and 12 frcs. — Raignoires: 16 frcs. — Fauteuils orchestre 20 frcs. — Fauteuils balcon 20 frcs. — Firstloges 16 frcs. — Second loges: 12 - 10 - 9 frcs.

Odéon. Tel: Fleurus 08-31. Prices: Avant scènes balcon 14 frcs. — 1rst. loge and Baignoires: 12 frcs. — Fauteuils balcon 12 frcs. — Fauteuils orchestre 11 frcs. — When music: 1 franc extra is charged.

Champs-Elysées, 13 Avenue Montaigne which leads from the rond-point to the river Seine — half a mile about from the rond point, a few steps from the Seine. Tel: Elysées 72-42. — Métro: station Marbeuf; station George-V. — Autobus: Gare du Nord-Champ de Mars (AC); Gare Saint-Lazare-Boulevard de Grenelle (AH); Neuilly-Hotel de Ville (C). — Tramcars: Passy-Hotel de Ville (12); Versailles-Louvre (1); Gare de Lyon-Avenue Henri-Martin (19); Montparnasse-Etoile-Courbevoie (92); Bastille-Champ de Mars (14); Mairie du XVe-Gare du Nord (33); Louvre-Saint-Cloud (2).

The Theatre des Champs Elysées is one of the rare theatres in Paris where there, are no extra charges for the programmes and cloak-room. Tips are strictly forbidden. — Tickets from 30 to 8 frcs.

Travelling Agencies: Exprinter, 2 rue Scribe. Tel: Gutenberg 67-93.

Union Interalliée: 33 Rue du Faubourg St. Honoré. Tel: Elysée 67-18. Under the presidency of Marshall Foch this club has as its purpose to bring together on terms of friendly intimacy the twenty seven allied and associated countries and to receive foreigners of distinction passing through Paris and place them in contact with Parisian society.

Gambling is forbidden and women are admitted. Weekly gatherings are held on *Saturday*. The number of members is very limited but a foreigner visiting in Paris can join as a non-resident member.

University life (refer to Prismatic Paris) and for practical information to Bureau des Renseignements de la Sorbonne, Tel: Gobelins 12.61.

The American University Union, 173 Bard St. Germain. Tel: Fleurus 23-24, under Management of Dr. Ch. Krans, is an institution supported and controlled by some fifty of the leading American Universities, colleges, and educational organizations — the only institution here with this representative character. The Union's aims are: to serve as a bond between universities here and at home by encouraging the attendance of American students at universities abroad; and to be a clearing house of information for students and professors at home, for American students abroad, and for French professors and students

who seek information concerning American educational matters. The Union in Paris offers a library and other rooms for the use of students, aims to make their sojourn in France more profitable and agreeable, and to further their interests in general. All services are gratuitous.

When to see Paris page 13

Wines of France page 34

"Prismatic Paris" will be published as soon as there will be a sufficient number of subscriptions. It will present the Academy, the Litterary circles, the studios, the antiquity shops, the Faubourg St. Germain, the old mansions of Paris, the salons. and each subject will be treated by leading writers such as Maurice Donnay, A. de Fouquières, J. de Castellane, Comte de Saussine, Marcus Selden Goldman, Ramon Guthrie. The illustrations will be by A. Marty, B. Boutet de Monvel etc.

Ask your bookseller to suscribe for you to „Prismatic Paris“.

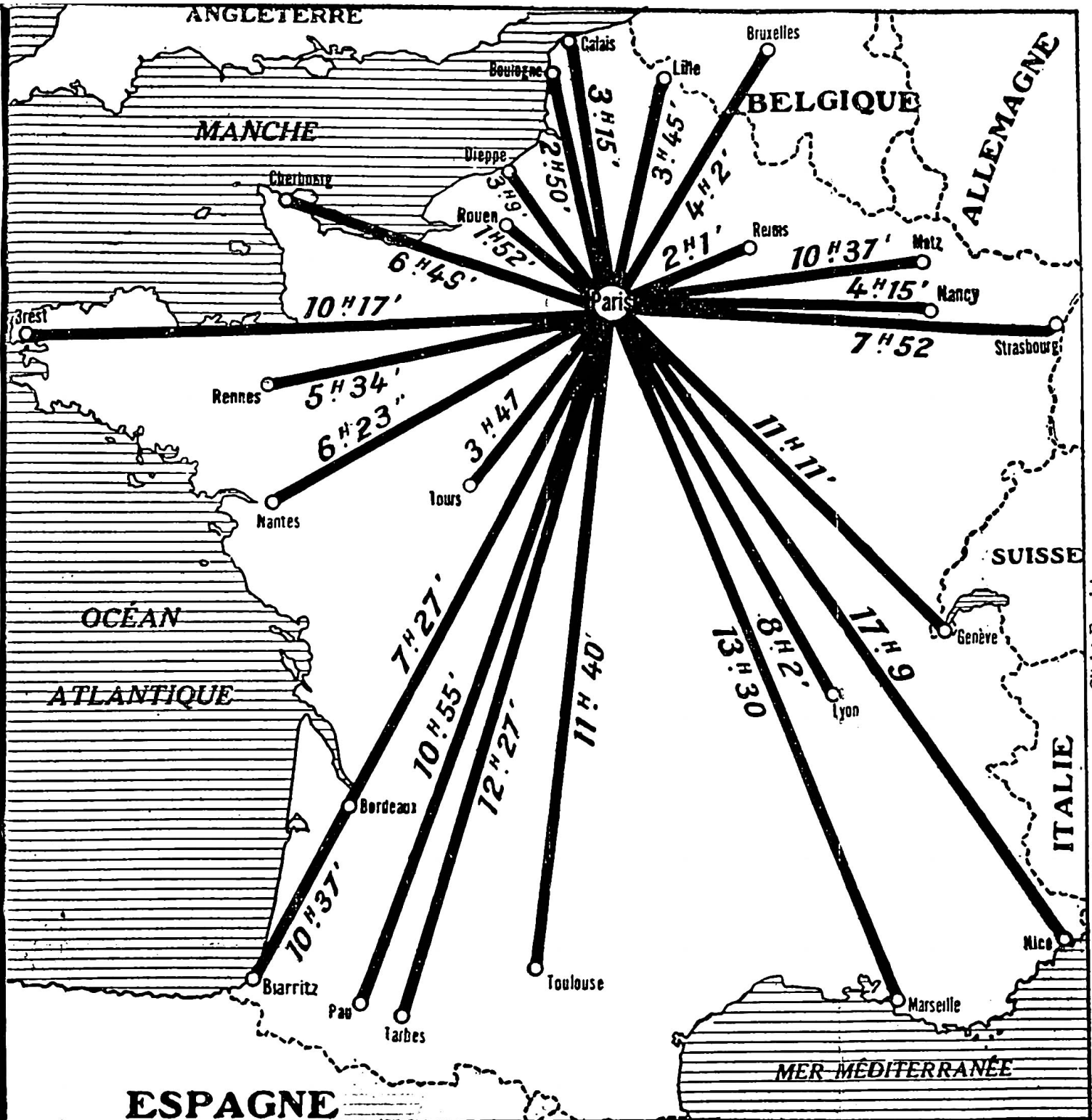


marie labatut

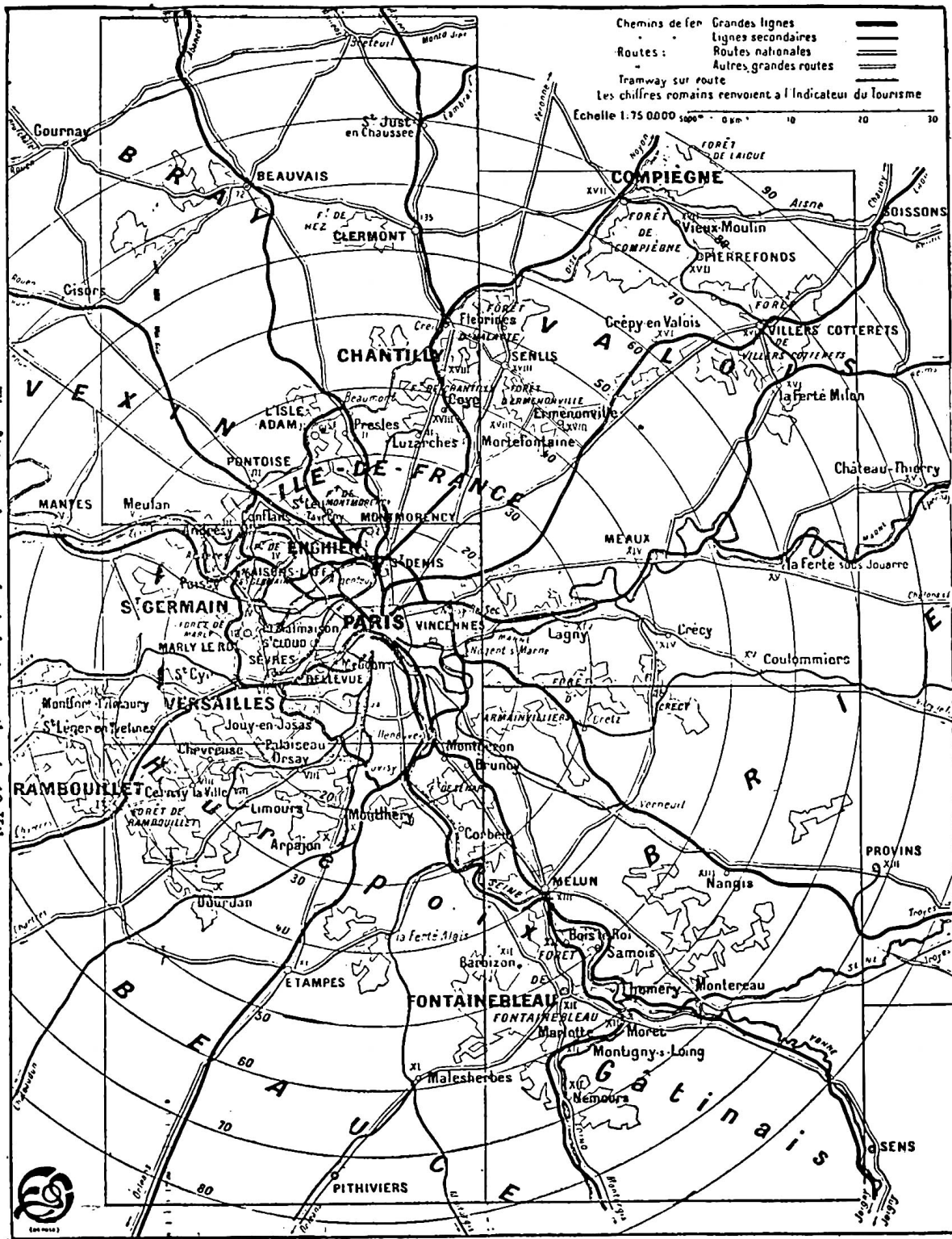
50 rue Pierre Charron





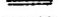
Antiquites Objets d'Art

—
DÉCORATION
ANCIENNE & MODERNE



Cliché Excelsior.



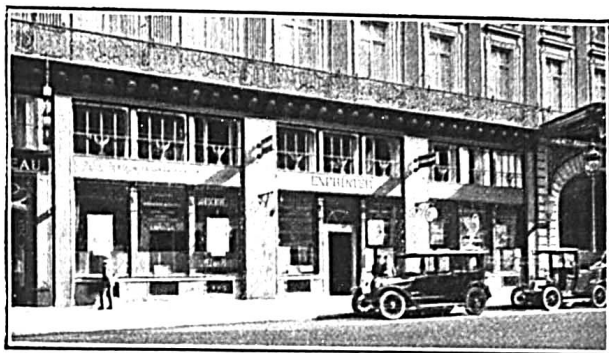
Chemins de fer Grandes lignes 
 Lignes secondaires 
 Routes : Routes nationales 
 Autres grandes routes 
 Tramway sur route 
 Les chiffres romains renvoient à l'Indicateur du Tourisme

Echelle 1:75 000 5000 0 km 10 10 10

The distance from each circle to another is 10 Kilom.

With Special permission of the "Indicateur du Tourisme".





LEAVING PARIS

By applying to Expr-Inter, 2 rue Scribe, Louvre 28-42, for the mapping out of your trip, a few days before starting, you will avoid all tiresome waiting at the station. You will be able to register your luggage without any trouble. You will have your seat reserved in the train and a room kept for you in whatever hotel you have chosen to stop at. All this without any extra charge: On the contrary special facilities are offered you.

EXPR-INTER'S CHIEF AGENCIES

FRANCE — Alger: 7, rue de la Liberté — Arcachon: Agence Amanieu et Cie. — Bordeaux: 42, Cours de l'Intendance. — Cherbourg: Exprinter, 33 rue du Val-de-Saire. — Dinard: Banque Jules Boutin. — Lille: Exprinter, 83, rue Nationale. — Marseille: 35, rue de la Cannebière. — Modane: Agence Adeline (Gare). — Nice: 12, Avenue Félix-Faure. — Reims: Chalet de Tourisme (face la Gare). — Rouen: 16, Quai de la Bourse. — Strasbourg: 31, Place Kléber. — Verdun: 2, Place Chevert. — Vichy: 17, rue Sornin.

EUROPE. — Amsterdam: Lissone et Zoon. — Leidschestraat, 5. — Anvers: Claes, 21, Courte rue de l'Hôpital. — Bâle: 3, Centralbahnplatz. — Barcelona: Maisans, Rambla Canaletas, 2. — Bruxelles: François, 45, Boulevard Adolphe-Max. — Bucarest: Exprinter (Europa), Ca ea Victoriei, 57. — Budapest: V. Vigado. — Buenos-Ayres: Exprinter, 154, San Martin. — Florence: Humbert, I A., Via Roma. — Genève: Veron, Grauer et Co. 22, rue du Mont-Blanc. — La Havane: Ballou et Hill, 611, Ro-

bins Building. — Londres: Jackson, 7 et 8, Charing Cross. — Lisbonne: Excursion Society Ltd. — 20, Rua do Alecrim. — Lausanne: 36, rue du Petit-Chêne. — Liverpool: 18, Chapel Street. — Madrid: Servicio Turismo — Arénal 1. — Manchester: 44, Picadilly. — Milan: Sommariva, 7, Via Dante. — Montevideo: Exprinter Calle 25 de Mayo No. 419. — Rio de Janeiro: Exprinter, Avenida Rio Branco 183. — Rome: Sommariva, Piazza di Venezia. — Southampton: 20, Oxford Street. — Turin: Perlo et Co. Gallerie Nazionale. — Vienne: Verkehrsbureau, Kaertnerring, 11. — Zürich: Bahnhofstrasse, 40.

NORTH AMERICA. — Baltimore: 306, North Charles Street. — Boston: 248, Washington Street. — Chicago: 53, West Jackson Boulevard — Cincinnati: 123 East, 6th Street. — Detroit: 524 Griswold Street. — Los Angeles: 751, Spring Street, South — Minneapolis: 306, Second Avenue South. — New York: 59 West, 37 Street. — New Orleans: 295, St. Charles Street. — San Francisco: 672, Market Street. — Washington: 1. Woodward Building.

PARIS-LONDON DAILY TRAIN SERVICES

via CALAIS-DOVER

Paris (Nord) dép.	10.00	12.00
Calais-Mme arr.	13.15	15.15
Calais-Mme dép.	13.40	15.45
Dover arr.	15.00	17.00
Dover dép.	15.25	17.30
London Victoria arr.	17.10	19.15
London Victoria dép.	11.00	16.30
Dover arr.	12.40	18.05
Dover dép.	12.55	18.15
Calais arr.	14.10	19.35
Calais dép.	14.50	20.00
Paris (Nord) arr.	18.15	23.25

via BOULOGNE-FOLKESTONE AND BOULOGNE-DOVER

Paris (Nord) dép.	8.25	16.00
Boulogne-Mme arr.	11.17	18.52
Boulogne dép.	11.35	19.10
Folkestone arr.		20.45
Folkestone dép.		21.00
Dover arr.	13.10	
Dover dép.	13.35	
London Victoria arr.	15.20	22.40
London Victoria dép.	9.15	14.00
Dover arr.		15.40
Dover dép.		16.00
Folkestone arr.	10.58	
Folkestone dép.	11.15	
Boulogne-Mme arr.	12.45	17.35
Boulogne dép.	13.27	17.58
Paris (Nord) arr.	16.30	21.00

Pullman Cars (First class only. Sup. 3/6) between
Folkestone and London and Dover and London.

via DIEPPE-NEWHAVEN

Depart Paris, Saint-Lazare . . .	10.36 am.	9.05 pm.
Arrive London (Victoria) . . .	5.40 pm.	7.25 am.
Depart London (Victoria) . . .	10 am.	8.20 pm.
Arrive Paris, Saint-Lazare . . .	7.15 pm.	6.56 am.

« Couchettes » are run on the night services.

via LE HAVRE-SOUTHAMPTON

Dep. Paris, St-Lazare, 7.40 pm. Dep. London 9.30 pm.
 Arrive London (Waterloo), 8 am.
 Arrive Paris, St-Lazare, 12.33 pm.
 Sundays excepted.

RESERVED PLACES. — On the payment of a supplement of Fr. 2,50 per seat on the French trains and Fr. 3,50 on the English trains. 1st and 2nd class seats can be reserved in advance in the trains from Paris to Calais or Boulogne, and in all classes in the trains from Dover or Folkestone to London. In the English trains, passengers with these reserved seats can obtain meals in their compartments. Cabins can also be reserved in advance, the charge being payable on board.

PASSPORTS. — Passengers for England should have their passports endorsed by the British Passport Controller, 3 rue Chaillot, Paris. For the return journey from England, passports should be endorsed at the French Consular Offices, 7, Gower Street, London, W. C. 1. This does not apply to French, British, Belgian, Dutch, Swiss, Spanish subjects, in either direction.

BAGGAGE. — Baggage is registered direct from Paris to London (Victoria). Each passenger is entitled to 30 kilogrammes free of charge.

CUSTOMS. — Baggage registered from Paris to London (Victoria) is examined by the French Customs at either Boulogne or Calais before embarkation, and is again examined on arrival at Victoria by the British Customs.

PRICE OF TICKETS (Port Tax included)

	Single(val. 7 days)		Ret. (val. 1 m.)	
	1st Cl.	2nd Cl.	1st Cl.	2nd Cl.
	Fr. c.	Fr. c.	Fr. c.	Fr. c.
<i>Paris to London</i>				
via Boulogne-Folkest.	216.95	150.80	405.50	285.90
<i>Paris to London</i>				
via Boulogne-Dover	230.05	162.05	431.70	308.40
<i>Paris to London</i>				
via Calais-Dover	239.15	168.05	438.65	313.30
<i>Paris to London</i>				
via Dieppe	176.15	121.45	321.15	219.90

NOTE. — Owing to the fluctuations in the rate of exchange all prices quoted are subject to alteration on the first of every month.

Expr-Inter Agency in London, Jackson, 7, Charing Cross.

AIR TRAVEL

RATES and HOURS of the AIR UNION.

Paris—London: Departure every day, Sunday excepted, at 11.00 — 11.30 — 12.00 — 12.30 — 13.00 — 15.00. — Hours of arrival: 13.00 — 14.30 — 15.00 — 15.30 — 17.10. — Duration of travel: 2 hours and half.

Paris—Brussels—Amsterdam: One departure a day, Sunday excepted at 11.00. Arrival at Brussels at 13.00 — at Rotterdam, 15.10 — Amsterdam, 15.55.

Rates: Passengers: Paris—London: Single trip: 300 frs. Return 600 frs. — Paris—Brussels: Single: 150 frs. Return: 275 frs. — Paris—Amsterdam: Single: 275 frs. Return: 500 frs. — (15 kilos luggage allowed free.)

Motor Cars leave the offices of the Air Union, 6 rue Auber, one hour before the hour of departure of the aeroplane.

Freight rates: from 3.50 and 5 frs. per kilo, to 45 frs. per 30 kilos. Maxima dimensions: for parcels: 1 meter \times 0,40 \times 0,40.

HANDLEY PAGE SERVICE

Paris—London: The motor Car leaves the Hotel Crillon at 10 a.m., Le Bourget at 11 a.m. — Hotel Crillon at 2 p.m., Le Bourget at 3 p.m.



By
FASTEST TRAINS
 it takes

10 hours from Paris to	Aix-les-Bains	361 miles
115	Alexandria, Egypt	2,131 "
13	Amsterdam	346 "
7	Antwerp	228 "
21½.	Berlin	670 "
8	Bordeaux	358 "
5½.	Brussels	200 "
60	Bucharest	1,597 "
121	Cairo	2,259 "
16½.	Cannes	656 "
55	Christiana	1,129 "
11½.	Cologne	309 "
87½.	Constantinople	1,962 "
35	Copenhagen	811 "
28	Florence	776 "
16	Frankfort	424 "
11½.	Geneva	388 "
20	Genca	598 "
22	Hamburg	588 "
3½.	Havre	141 "
35	Lisben	1,154 "
7¼.	London	259 "
7½.	Lyons	318 "
25½.	Madrid	901 "
12½.	Marsailles	536 "
18	Milan	559 "
17½.	Monte Carlo	685 "
18	Munich	582 "
37	Naples	1,062 "
17	Nice	675 "
30	Rome	907 "
11	Rotterdam	287 "
—	Petrograd	1,690 "
49	Stockholm	1,116 "
16½.	Turin	494 "
23	Venice	725 "
28	Vienna	872 "
38	Warsaw	972 "

how to enjoy your trips?

on the same line as this book, we intend to publish a series of lively and practical guide books: "*how to enjoy your trip in France*". These volumes will be devoted to the description of the most interesting

regions of France: Environs of Paris — the Chateaux Country — the Riviera — Brittany — Morocco etc. — They will give historic hints, clear maps, thumbnail descriptions of the unbeaten tracks of each region, their artistic resources — their good cheer, specialties — their old customs.



SAILINGS

Full particulars of sailings, fares, accommodations available and all information respecting the facilities offered by the various lines will be readily furnished by the **Expr-Inter Agency 2 Rue Scribe** which will book for you exactly at the same rates that those to be had at the shipping companies.

Reservation: On the North Atlantic steamers, passages can be reserved on payment of one quarter of the passage money.

Children's Fares: —

First Class—Under one year, £3 16 0; from one to ten years, Half-fare

Second Class—Under one year, £2 11 0; from one to ten years, Half-fare.

United States Head Tax.—As required by the United States Government, all classes of passengers (except United States citizens) proceeding to points in the United States must pay Head Tax of 40s. od. per person, in addition to Ocean Fare at time of booking. Children under 16 years of age accompanying their father or mother are exempt from this Tax. No Tax is charged to passengers proceeding to Canadian points.

<u>LINES</u>	FARES to U-S-A	
	<u>MINIMUM FIRST CLASS</u>	<u>MINIMUM SECOND CLASS</u>
French Line		
From Havre and Bordeaux	£40 15 5	£26 2 9
From Plymouth . . .	£56 7 0or	£29 18 0or
	£55 14 0	£27 12 0
Cunard Line		
Southampton and Cherbourg to New York . .	£57 10 0or	£31 1 0or
	£47 3 0	£27 12 0
Liverpool (via Queenstown) to New York	£47 3 0	£28 12 0
Liverpool to Boston (via Queenstown) . .	£47 3 0	£28 15 0
Holland-America Line		
From Rotterdam and Boulogne	£44 17 0	£27 12 0
From Plymouth	£44 17 0	£26 9 0
Red Star Line		

	£47 3 0or	£28 15 0or
From Antwerp	£44 17 0	£27 12 0
From Southampton	£44 3 0or	£27 12 0or
	£44 17 0	£26 9 0
Royal Mail		
From Southampton	£47 3 0	£27 12 0
From Cherbourg	Fcs. 2357.50	Fcs. 1437.50
United American Line		
From Cherbourg	£50 12 0	£29 18 0
From Southampton	£50 12 0	£28 15 0
United States Lines		
From Southampton	£47 3 0	£29 7 0
	to	£28 15 0
From Cherbourg	£52 18 0	£30 10 0or
		£29 18 0
White Star Line		
From Southampton and Cherbourg	£58 13 0or	£32 4 0or
	£56 7 0	£29 18 0



AS THE LIFE OF PARIS IS EVER CHANGING

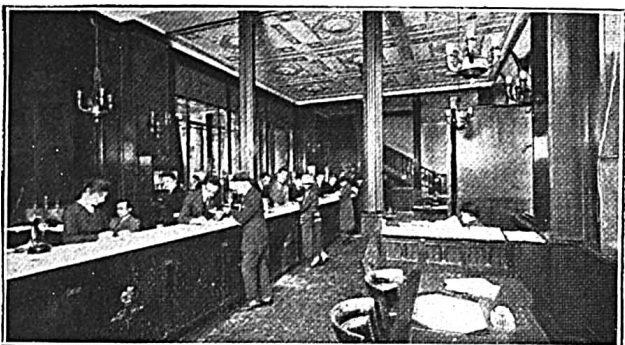
and because "How to Enjoy Paris" **IS ALIVE**, "*How to Enjoy Paris*" will be republished twice a year, at the opening of the spring and winter seasons.

When a new edition of "*How to Enjoy Paris*" comes out, don't say "I have already seen the book before". Each edition gives the new programs of the season and the changes which have occurred in places where changes are the least expected.

By subscribing twice a year to "*How to Enjoy Paris*" you will save much time and money.

The next edition of "*how to Enjoy Paris*" will include an important chapter on the *ARTISTIC TREASURES* of paris, presented in an entirely new and original way.





If you want

To spend an agreeable week-end near Paris,
To travel conveniently, apply to the
EXPR-INTER agency 2 Rue Scribe

Telephone: Louvre 28 42 — Gutenberg 67-93 — 67-94
Inter special 510

where you will find an experienced staff — ready to give you all the information you may want for your stay in Paris, or your trip in Europe — change your money — take care of all your financial transactions — get your railroad tickets and your passages on the boats, without any extra charge.

If you want

To avail yourself of Shopping opportunities (dresses or others) and get more information concerning your stay in and near Paris, apply at the same office, ask for **ENJOY PARIS** service, 2 Rue Scribe

The Expr-Inter agency is in the very heart of Paris, 2 rue Scribe, where you are bound to pass several times a day, and close to the Grand Hotel, the largest and best situated Hotel in Paris (900 comfortable rooms).

