

Bürglen

gently towards Flüelen, with a fine view of the valley of Uri in front of us. At Flüelen a tram car takes us in 10 minutes to Altdorf, with the famous William Tell monument. From here we reach by a 30 minutes' walk the village of Bürglen, the birthplace of Tell and a famous summer resort.

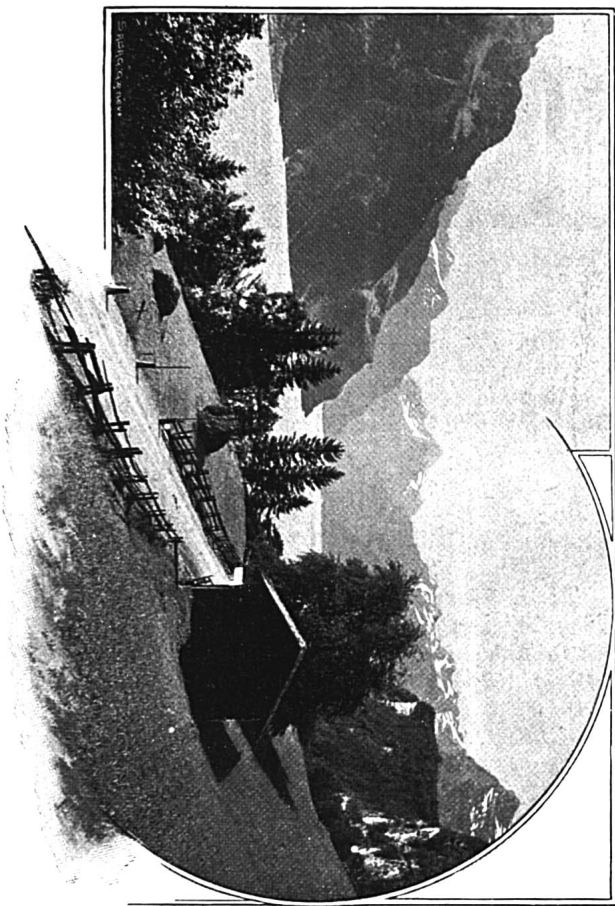


SEELISBERG.

The Seelisberg is the mountain opposite Brunnen, projecting into the lake and separating the basin of Gersau from the Lake of Uri. Its highest point is the *Seelisberger-Kulm* or *Niederbauen* (6315 feet). On an open terrace of the mountain, over the Lake of Lucerne, lie the little hamlet of *Seelisberg* and the *Kurhaus Sonnenberg*, one of the most famous of the health-resorts on this lovely lake.

From the left bank of the lake there are three paths leading up to Seelisberg and Sonnenberg: (1) A new and excellent carriage-road from *Beckenried*, leading through beautiful shady meadow-lands and past the pretty waterfalls of the *Riesleten*. In $\frac{3}{4}$ hour we reach the hydropathic establishment of *Schöneegg*, with beautiful wooded grounds and interesting

VIEW FROM SELIBERG



gorges; in another $\frac{1}{4}$ hour we come to the mountain village and health-resort of **Emmetten**, and through a grassy valley where the cascade of the Blattibach attracts our attention, we reach (in an hour) a fir-wood; traversing this, the road, which commands a view of the little *Lake of Seelisberg* beneath us on the right, ascends to the health-resort in $\frac{1}{2}$ hour. (2) Another and shorter carriage-road, and a still shorter foot-path, leading past the Hotel Bellevue, with its lovely terrace, where the glorious view is unfolded to us in its full extent, rivalling with that of Sonnenberg, ascends from the steamboat-pier at *Treib* in numerous zigzags to Seelisberg in one hour. (3) There is a good, shady and romantic path leading up the rocks from the *Rütli*.

The little village of **Seelisberg** lies at an altitude of 2628 feet above the sea; somewhat higher is the chapel of *Maria Sonnenberg*, a place of pilgrimage much in favour with dwellers in the surrounding district; and 2794 feet above the sea, a quarter of an hour's walk above the village, situated almost on the brink of a precipice, but sheltered from the cold winds, stands the *Hotel and Kurhaus of Sonnenberg*, with magnificent gardens and shady grounds. The position is one of the finest in the world, the view from the terrace, projecting at a great height above the Lake of Lucerne, being superb. Immediately below us we have the meadow of Rütli and the dark-green waters of the Lake of the Four Cantons, on the further shore of which, behind Brunnen, the vale of Schwyz opens, with the Mythen in the background, the Rigi on the left, on the right the Fronalpstock and the terrace of Morschach with its hotels, while the Axenstrasse and the St. Gothard Railway is seen skirting the rocky shores of the lake from Brunnen to Flüelen; Tell's Chapel, Flüelen and the valley of the Reuss are also within view.

In the vicinity of Seelisberg and Sonnenberg there are numerous fine points of view, such as the *Schwendiflüh*, rising

above the Kurhaus, the *Castle of Beroldingen*, $\frac{1}{2}$ hour distant (accessible also by a longer path leading to the precipices of the Teufelsmünster, falling off perpendicularly to the lake) the *Eck* and the *Känzeli*, all commanding magnificent views of the Alps of Canton Uri. The *Seelisberger Kulm* can be ascended by practised mountaineers in 3 hours; the excursion is an enjoyable one, and a day may well be devoted to it but a guide should be taken. The view is equal to that from the Fronalpstock or the Grosse Mythen. There is also the very romantic mountain-path from *Seelisberg to Bauen*; constantly commanding a view of the Lake of Uri and the valley of the Reuss, it leads through luxuriant forests and meadows down to the lake. From Bauen a delightful excursion can be made by boat to *Tell's Chapel* on the opposite shore, or to *Isleten* and the mouth of the *Isenthal*. This secluded Alpine valley is reached from Isleten by a new carriage road, leading in one hour to Isleten, a little hamlet and the starting-point for the ascent of the *Urirotstock* (9632 feet), the summit of which is reached in 6 or 7 hours, after passing the night in the chalets of the *Hangbaumalp*. The panorama from this mountain is among the grandest that the Alps afford, and the view of the Lake of the Four Cantons, lying far below in a deep fissure of the rocks, is a surprise that can never be forgotten.

Fare Lucerne-Treib and back 1st cl. fr. 4.—, 2d cl. fr. 2.50.



THE BÜRGENSTOCK.

What the Axenstein and Seelisberg are for the upper parts of Lake Lucerne, the Bürgenstock is for the lower parts. From the Seebrücke at Lucerne this mountain is seen