

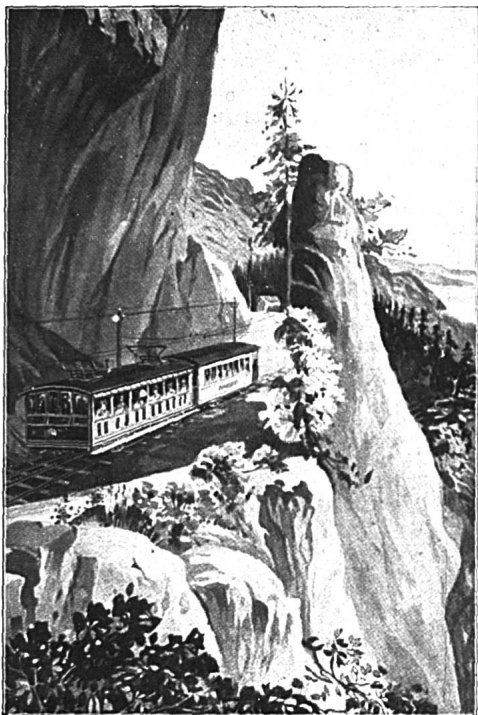
THE RIGI.

The Rigi has one advantage over other mountains, namely its wonderful situation between three lakes; it is like an island peak, and the sheets of water surrounding it impart a unique and incomparable charm to the landscape. A fine day spent on the Rigi may be counted among the highest enjoyments, and will not soon be forgotten even by those for whom mountain scenery does not possess the charm of novelty.

There are a number of *footpaths* leading up the Rigi, for not only every steamboat station at the foot of the mountain, but all the St. Gothard Railway stations in this district have their path to the heights which are the goal of so many thousands. The shortest, though at the same time the steepest, of these routes leads the pedestrian up to the Kulm from *Küssnacht* or *Immensee* in 3 hours; all the others, with the exception of the *Vitznau* path, occupy half an hour longer. Among them all, the paths from *Weggis* and *Goldau* (a station on the St. Gothard Railway) are the most frequented and the best kept, while they are so easy to find, that any description would be superfluous. While to the traveller starting from *Weggis* the prospect unfolds itself little by little, the *Goldau* route, leading past *Rigi-Dächli* and through the valley of *Rigi-Klösterli*, is perhaps the most impressive, because it displays to us suddenly the entire vast panorama of the Alps. Since the construction of the two railways to the summit of the Rigi, the number of those who make the ascent on foot has of course been considerably reduced. All honour to the sturdy mountaineers who put their trust in their own stout limbs, but we must confess that in our opinion more enjoyment can be obtained by taking the train and arriving at the summit fresh and unfatigued, reserving all our strength and sparing our time so as to be able

to enjoy thoroughly the prospect from the summit and the numerous walks that can be taken on the mountain-heights.

And now for the **Rigi Railways**. — First comes the **Vitznau-Rigi line**, the oldest and at the same time the

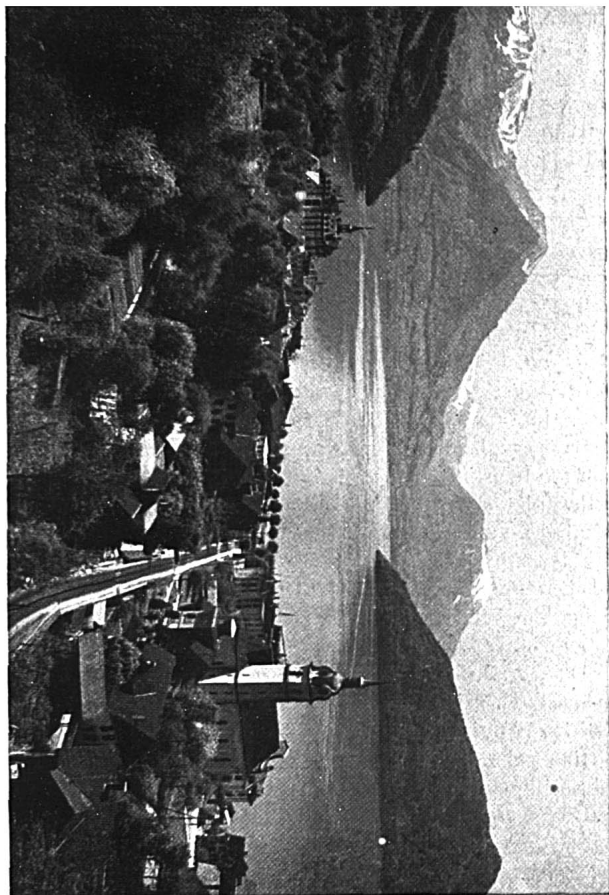


Mounting the Kräbelwand (Arth-Rigi Railway)

most interesting of the mountain railways of Switzerland. Constructed between 1869 and 1872, it attains an elevation

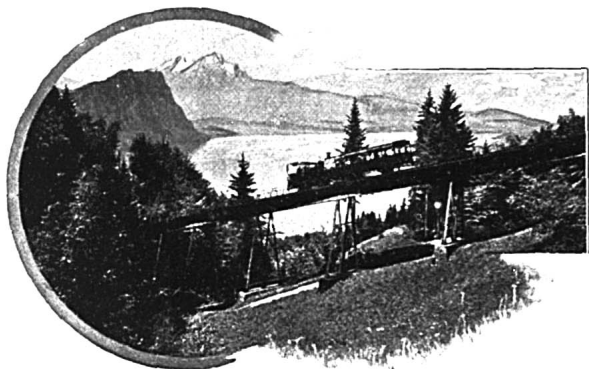
of 4268 feet above the lake, with a mean gradient of 19 in 100. It mounts rapidly through chestnut-groves and across the romantic *Schnurtobel Bridge* to *Freibergen* station. The lake is quickly left beneath us, the prospect expands, mountains begin to lift their crests around us, and passing the *Romiti-Felsentor* station we reach the Kurhaus of **Rigi-Kaltbad**, with its famous terraces and views and its extensive and picturesque grounds. A few yards west of the hotel, between rugged masses of rock, is the "Pilgrim's Chapel." An easy ten minutes' walk over level ground takes us to the "Känzeli" (4470 feet), belonging to the Kaltbad hotel, a magnificent point of view and the loveliest spot on the Rigi. At Kaltbad begins the **Kaltbad-Scheidegg-Railway**, which, with a mean gradient of 2.5 in 100, conveys us to *Rigi-First*, below the Schild, and beyond it, in 30 minutes to *Rigi-Scheidegg* (see below). The Vitznau-Rigi Railway continues its upward course to *Rigi-Staffel*, where all at once there opens before us the immense prospect of the hill country of north-eastern Switzerland, with its lakes, stretching northwards as far as the Jura, Black Forest, and Vosges Mountains,—a never-to-be-forgotten sight! Rigi-Staffel, indeed, with its two large hotels, is the centre of the Rigi traffic; from here the railways run up to the Kulm, the Arth-Rigi line joining the Vitznau line here and keeping side by side with it to the summit.

The **Arth-Rigi Railway** starting from *Goldau* has introduced electric traction and with a mean gradient of 11.6 in 100, it attains a height of 4360 feet above its starting point. Traversing the grassy valley of Arth, studded with fruit-trees, we reach the important railway station of *Goldau*, the junction with the St. Gothard line and with the Süd-Ost Railway, coming from the Lake of Zurich. It is here that the mountain railway begins ascending the rocky side of a ravine, through tunnels and across bridges and viaducts among romantic scenery, and



VITZNAU AND THE RIGI-RAILWAY

commanding a gradually extending view of the vale of Schwyz and the Alps of eastern Switzerland. We soon reach **Rigi-Klösterli**, where, in a delightfully sheltered Alpine valley, stand an old pilgrimage chapel, a Capuchin hospice, two hotels, and several inns. Rigi-Klösterli is the most sheltered place on the Rigi, and is therefore frequently chosen by those who intend to make a prolonged stay on the mountain. From here the train ascends through rich Alpine pastures



Schnurtobelbrücke (Vitznau-Rigi-Railway)

and groves of fir-trees to *Wölfertschen-station*, from which an excellent level path takes us in 15 minutes to *Rigi-First*, and then we come to *Rigi-Staffel*, where all at once a splendid panorama is unrolled before the astonished traveller. It is one of the most imposing sights the Alps afford.

The **Rigi-Kulm** (5905 feet) is the culminating point of the Rigi and the summit most frequently ascended by tourists. At sunrise or sunset hundreds of persons are often gathered on the rounded grassy top; somewhat lower (so that they do not interfere with the view) stand the imposing *Rigi-Kulm*

Hotel and the little terminus of the Rigi-Railways. We will not attempt to describe the grand prospect; words, indeed, cannot do justice to a landscape more than 200 miles in diameter, including fourteen lakes, the undulating hill-country north of the Alps, and the Jura, Black Forest, and Vosges Mountains on the northern horizon. while towards the south a host of towering peaks form a snowy garland.

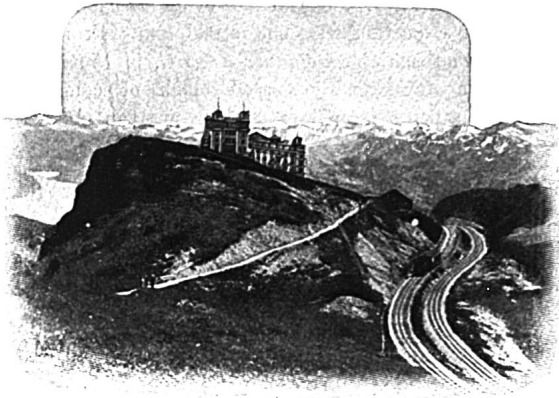


Rigi-Kaltbad

Gleaming lakes and rivers, towns, villages, and grassy meadows lie at our feet, and range upon range of lofty mountains surround us. It is impossible to gaze on this glorious scene without feeling our hearts expand and rejoicing in the beauty of the earth.

No wonder that so many tourists spend several days on the mountain, although it is within such easy reach of Lu-

cerne. The hotels afford every comfort that one can wish for. But however short the time that we spend on the Rigi, we should by all means contrive to see either a sunrise or a sunset from the mountain-top, for the lowlands and the Alps never appear to such advantage as when the lakes are tinged with gold and the mountains dyed crimson by the beams of the rising or setting sun.



Rigi-Kulm

One should not be content with visiting the Rigi-Kulm alone, there being several other peaks each with its own panorama and its own special beauties.

A good footpath leads in $2\frac{1}{2}$ hours from *Rigi-Kulm* to *Rigi-Scheidegg*, or we can go by rail via Rigi-Kaltbad. Both the path and the railway wind round the peaks of the Rigi chain, in such a manner that at one moment we have a view to the north and at another to the south, so that now there lies before us the vale of Schwyz, and now the Lake of the Four Cantons with its magnificent background of mountains.

Between the Staffel and the Scheidegg rise the peaks of the *Rotstock* (5459 feet), *Schilt* (5413 feet) and *Dossen* (5538 feet), all commanding extensive views of Lake Lucerne.

The *Rigi-Scheidegg* (5406 feet) is often ascended for its own sake, being accessible by a path leading from Gersau in three hours through magnificent scenery, and commanding a prospect rivalling, and in some respects excelling, that from the Kulm, especially in regard to the view of Urirotstock and the eastern Alps. The platform of the *view-tower* (100 ft. in height) is a particularly fine standpoint. From here in 5 minutes we reach the *Goldauer-Känzeli*, in 15 minutes the *Burggeist*, a fantastically shaped block of conglomerate, and in rather more than half an hour we can climb to the summit of the *Dossen*.



THE ALPENGARDEN

At Rigi-Scheidegg a garden of the Swiss Alpine flowers has been created by the Natural Philosophical Association of Lucerne, containing many rare specimens.

But the most interesting excursion that we can undertake from Rigi-Scheidegg is the ascent of the *Rigihochfluh*

(5584 feet), the southernmost summit of the Rigi. The path leads past the *Burggeist* and along the ridge down to the "saddle" of the *Twäriberg* (3937 feet); then traversing a forest of young fir-trees and following the track, we ascend to a steep and stony defile, from which an iron ladder leads to the bold rocky summit, 2 1/2 hours from Scheidegg. It is advisable to take a guide.

The view from the Hochfluh is less extensive than from the Kulm, but the surrounding peaks appear loftier and grander and our eyes can follow the course of the green valleys far into the heart of the mountains; very striking too, is the contrast between the placid Lake of Lucerne and the stupendous outlines of the Alps,—indeed the delightful combination of lake and mountain scenery is a unique feature of the prospects from the Rigi.

The ascent of the Rigi-hochfluh alone would constitute a charming day's excursion for the visitor at Lucerne. Taking the steamboat to Gersau, an extremely romantic path, commanding extraordinarily fine views of the lake, leads in 3 hours to the summit. We can of course descend to Gersau by this path if we have ascended the Hochfluh from the Scheidegg.

The Rigi, from its northern to its southern extremity, thus affords a series of commanding points of view, still possessing all the charms that have in bygone years delighted so many thousands; its beauties, indeed, are and must be perennial, and generations to come will revel in the splendours that excited the admiration of the first lovers of nature who wandered over these breezy heights.



Excursions from the Stations on the Rigi.

From Kulm to:

Staffel 20 min., for continuation of excursions see "Staffel."

From Kaltbad to:

Känzeli 10 min.
Rotstock $\frac{3}{4}$ hr.
Staffel $\frac{3}{4}$ hr.
First $\frac{1}{2}$ hr.
Schilt $\frac{1}{2}$ hr.
Klösterli 25 min.
Unterstetten 1 hr.
Dossen $1\frac{1}{2}$ hr.
Scheidegg $2\frac{1}{4}$ hr.

From Staffel to:

Kaltbad 30 min.
Rothstock 20 min.
First $\frac{1}{2}$ hr.
Scheidegg 2 hr.
Klösterli $\frac{1}{2}$ hr.

From First to:

Rotstock 40 min.
Staffel 40 min.
Klösterli 15 min.
Schilt 20 min.
Unterstetten $\frac{3}{4}$ hr.
Scheidegg (Seeweg) $1\frac{1}{2}$ hr.
Felsentor $\frac{3}{4}$ hr.
Vitznau 2 hr.

Dossen $1\frac{1}{4}$ hr.
Weggis $2\frac{1}{4}$ hr.
Kaltbad 15 min.
Känzeli 25 min.

From Scheidegg to:

Dossen-Schilt-Rotstock-Staffel-Kulm
or vice-versa $3\frac{1}{2}$ hr.
Dossen $\frac{3}{4}$ hr.
Unterstetten (Seeweg) $1\frac{1}{4}$ hr.
First $1\frac{1}{4}$ hr.
Kaltbad 2 hr.
Staffel $2\frac{1}{4}$ hr.
Kulm $2\frac{1}{4}$ hr.
Klösterli $1\frac{1}{2}$ hr.
Hochstuh $2\frac{1}{4}$ h.
Gersau $2\frac{1}{2}$ hr.
Weissenstuh 2 hr.

From Klösterli to:

First 20 min.
Kaltbad 35 min.
Rotstock $\frac{3}{4}$ hr.
Staffel $\frac{3}{4}$ hr.
Kulm $1\frac{1}{4}$ hr.
Bruderbalm 20 min.
Goldau $1\frac{1}{2}$ hr.
Scheidegg $1\frac{3}{4}$ hr.
Dossen $1\frac{1}{4}$ hr.
Vitznau $2\frac{1}{2}$ hr.
Weggis $2\frac{1}{2}$ hr.
Küssnacht $2\frac{3}{4}$ hr.
Arth $1\frac{3}{4}$ hr.

Fare Lucerne-Rigi and back fr. 13.50.

