

railway through the Canton Schwyz to the famous pilgrimage-place of Einsiedeln and the Lake of Zürich, and the beautiful valley of Seetal, extending towards Aargau. As soon as we think of an excursion to these districts, each one resolves itself into dozens, every place becoming a centre for new excursions, so that it would be easy to catalogue a hundred or more.

THE LAKE OF LUCERNE.

Whose heart does not beat faster as he reads this title, which recalls all we have heard of the sublime scenery of the Lake of the Four Cantons, the magnificent description of Schiller, the story of William Tell, of whose heroic deeds its shores were the scene? A world of picturesque landscapes rises before our eyes, conscious as we are that this famous lake is a treasure-house of natural beauties.

Entrusting ourselves to its waters let us then explore all the recesses of its curiously winding shores, and mark the effects of light and shade which so enhance the beauty of its scenery.

Three steamboat trips will be necessary, the first, from Lucerne to Flüelen, taking us from one end of the lake to the other.

This delightful trip takes 2 hours and 40 minutes and from the very commencement affords delightful scenery the view of Lucerne itself, surrounded by orchards and dominated by its ancient towers, being especially pleasing. In front of us stretches the *Bay of Lucerne* with handsome villas rising among verdure on both sides, *Tribschen* and *Schlösschen Stutz* on the right, and *Seeburg* and *Wartenfluh* on the left, and on the promontory of the *Meggenhorn* the imposing *Villa Meggenhorn*, also the little island of *Altstadt*, the *Villa Merian*, and, on the *Küssnacht* arm of the lake.

the *Château of Neuhabsburg*. But our eyes soon turn to where the mountains raise their crests, the Rigi on the left, Pilatus, the Bürgenstock, the Stanserhorn, and the Buochserhorn on the right, and we get a momentary glimpse across the Brünig, of the monarchs of the Bernese Oberland, the Lauteraarhörner, the Schreckhörner, the Wetterhörner, Mönch, Eiger, and Jungfrau.

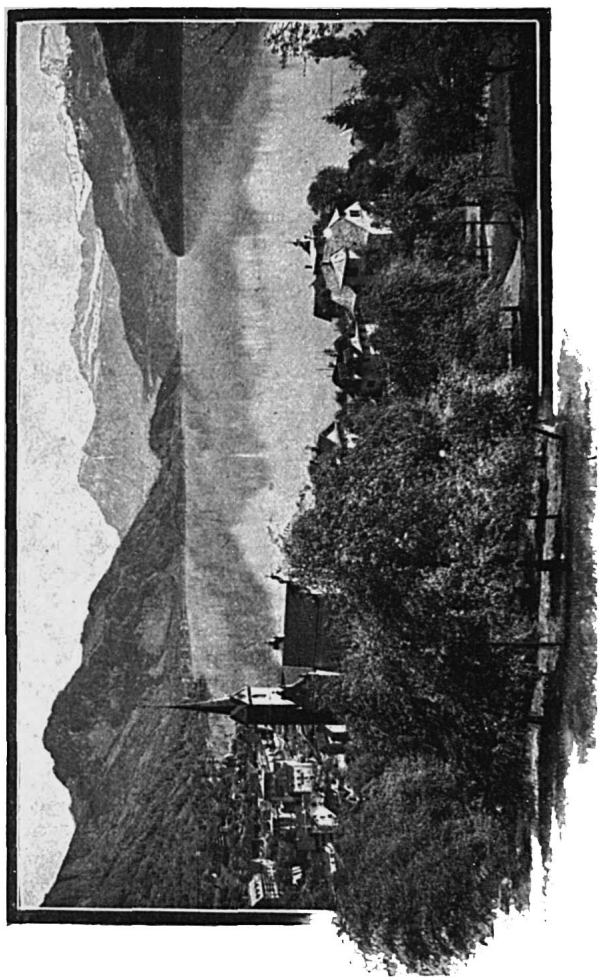
And now the steamer enters the *Kreuztrichter*, into which open the four lake-arms of Lucerne, Küsnacht, Alpnach and Weggis, so that we enjoy a view of each of them. We next enter the *Weggis basin*, embedded between the wooded precipices of the Bürgenstock (with its steep railway) on the right, and the rocky sides of the Rigi on the left. So far the boat has not halted anywhere, the steamers plying between Alpnach and Küsnacht calling at the landing places in the bay of Lucerne; but now comes the beautifully situated:

Hertenstein, where is the first open air-theatre in Switzerland, and then we reach:

Weggis, a health-resort remarkable alike for its superb situation and the mildness of its climate. Passing *Lützelau* we soon come to:

Vitznau, situated on a small patch of land below two summits of the Rigi, the Dossen and Vitznauerstock.

In spring and autumn Vitznau is a popular health-resort, its climate being as mild as that of Weggis; in summer it is much frequented by tourists as being the starting-point of the Vitznau-Rigi Railway (see p. 61). Beautiful grounds adjoin the Hôtel du Parc, and there is a romantic walk along the Dorfberg to the Mühlebach Waterfall. Restaurant near the Grubisbalm cavern. Weissenfluh Restaurant 1 1/2 hours. Flora Alpina Restaurant on the way to Gersau (20 min.), one of the most charming points on the lake. Beyond Vitznau it seems as if we had already reached the end of the lake and that the steambot was steering on to



WEGGIS

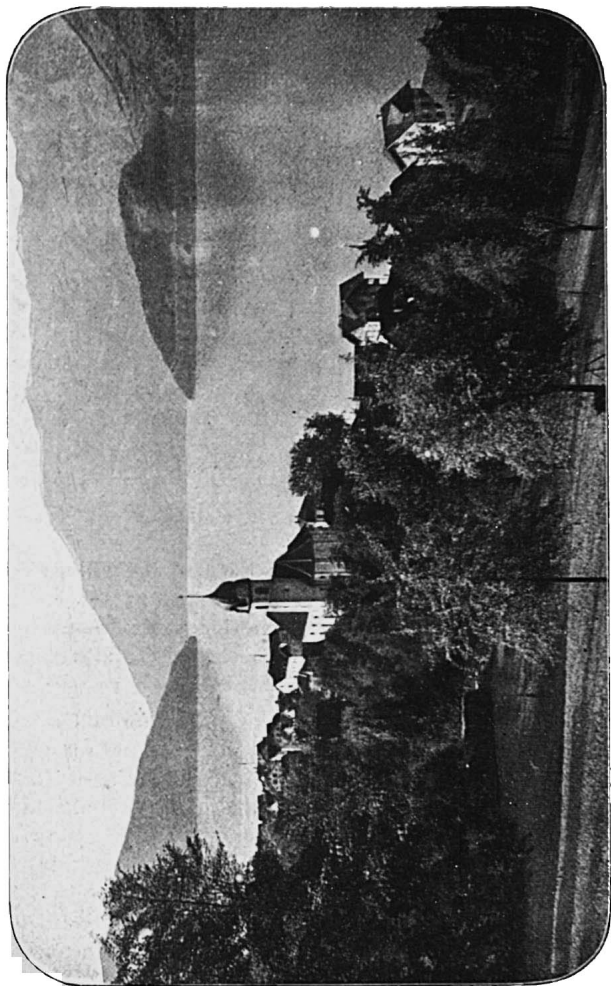
the rocks; but at the last moment a strait opens before us formed by the promontories of the Vitznauerstock and the Bürgerstock. Passing at a sharp angle, between these two "Nasen", as these headlands have been christened, the vessel enters *the basin of Buochs, Beckenried and Gersau*, rounds the southern part of the Bürgerstock, and calls at the village of Buochs.

Buochs belongs to the Canton of Nidwalden, and lies in a pleasant position at the foot of the Buochserhorn. Passing the picturesque *Chapel of Riedli*, and commanding all the time a beautiful view of the adjacent mountains, the steamboat next stops at :

Beckenried, a pleasantly cool village and popular summer resort, sheltered from the wind and embosomed in verdure; from here a road commanding a fine view leads to the well-known *Sanatoriurn of Schöneegg*; then, crossing the lake to the right bank, we come to :

Gersau, above which rises the Rigi-Scheidegg. Gersau enjoys a great reputation as a climatic health-resort, owing to its sheltered situation and freedom from dust (mean annual temperature of Gersau 50.1° F., of Montreux 50.9°). After leaving the village, which is quite shut in by rocks, the steamboat directs its course due east past the romantically situated *Kindlimord-Chapel*. The view towards Schwyz now opens, with the fearfully steep and barren summits of the Mythen towering in the background. At their base gleams *Schwyz*, in the middle distance *Ingenbohl*, and in the foreground, on the shore of the lake, *Brunnen*. Above Brunnen, on the steep Wasifluh, stand the palatial Hotels Axenstein and Axenfels, while on the left bank of the lake Sonnenberg and Seelisberg present a magnificent appearance. Again crossing the lake the steamboat reaches :

Treib, an old wooden inn, of historical interest, standing by itself at the foot of the Seelisberg. This is the landing-



BECKENRIED

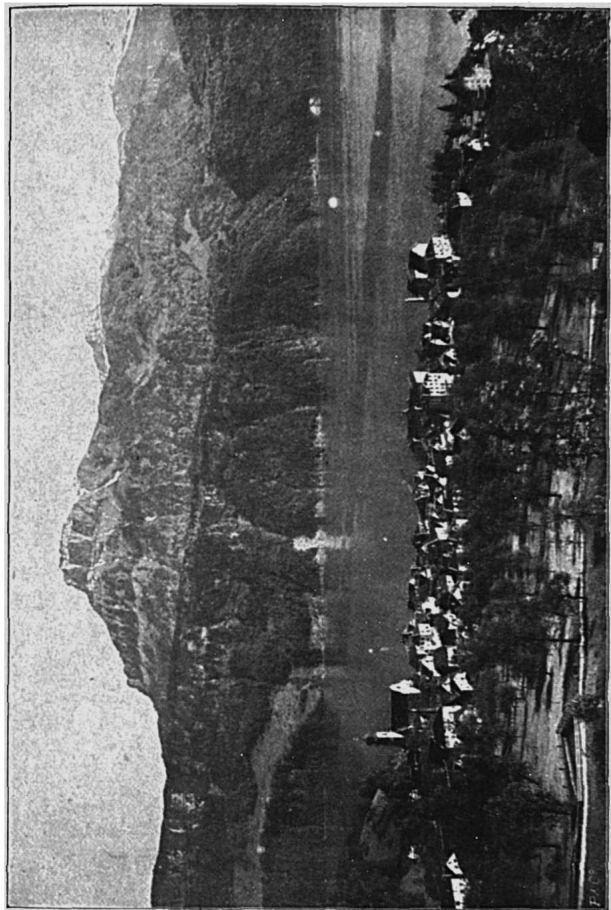
place for the loftily situated village of Seelisberg. On rounding the next headland, we see, rising from the lake, a pyramidal rock 85 feet in height, known as the *Mythenstein*. It bears an inscription in honour of Friedrich Schiller, the German poet,



Treib

who celebrated in immortal verses the deeds of William Tell the national hero of Switzerland. The steamboat now crosses the lake, which straitens again and turning sharply we reach Brunnen, the pleasant, trim, and much-frequented port of Canton Schwyz.

Brunnen, situated in the centre of the Forest Cantons, is a favourite resort of tourists, and possesses some fine gardens and promenades, besides being the starting-point for many interesting excursions. Here the last arm of the Lake of the Four Cantons opens before us, — the highly romantic *Lake of Uri*, shut in by precipitous banks and encircled by stupendous mountains. On entering this basin we have on our right, beneath the crags of the Seelisberg, the *Rütli*, the most sacred spot on the soil of Switzerland; here, in a steep meadow surrounded by trees, on the 7th Novem-

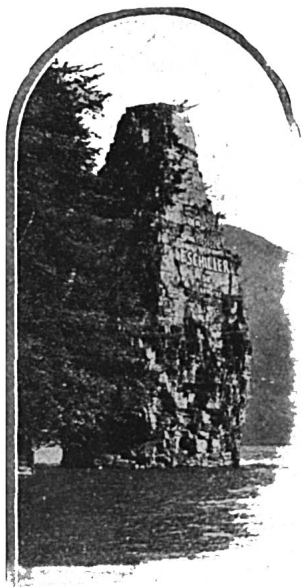


GERSAU AND THE BAJENSTOCK

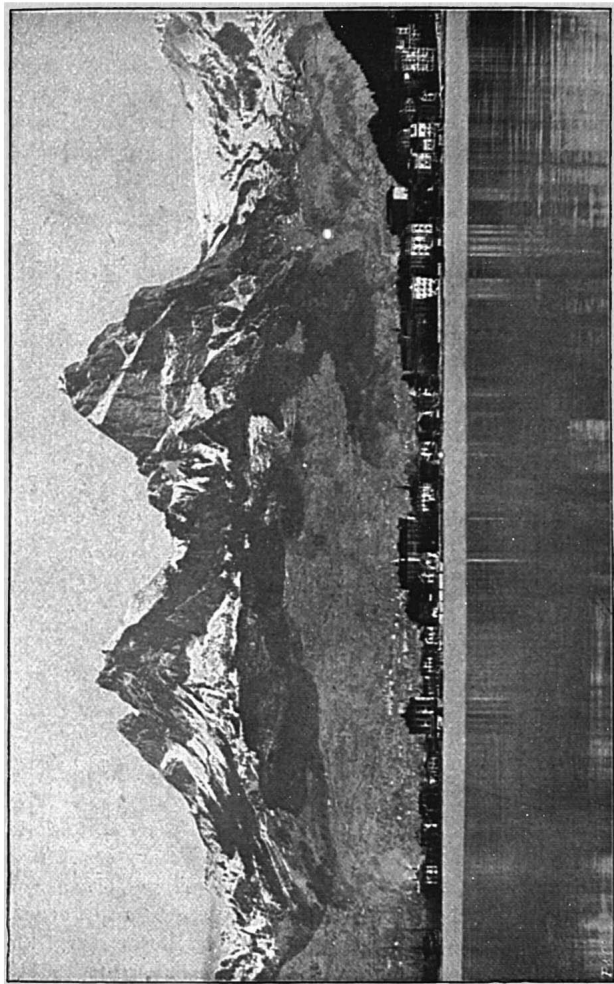
ber, 1307, Walter Fürst of Uri, Werner Stauffacher of Schwyz, and Arnold Anderhalden of Unterwalden, seconded by faithful followers, formed a league in the name of their cantons against the tyrannic rule of Austria. The Rütli is a national place of pilgrimage, and is often thronged with visitors on fine Sundays. Opposite the Rütli, on the east bank of the lake, rise the Fronalpstock and the chain of the Rössstock, beginning with the Axenberg. Through their base runs not only the picturesque *Axenstrasse* with its galleries excavated in the solid rock, but also the *St. Gothard Railway*, of which we catch glimpses here and there. Pursuing its course at long the rocky bank of the lake, the steamboat next stops at:

Sisikon, a village situated on a grassy patch surrounded by lofty rocks, near the middle of the *Axenstrasse*. From Sisikon the tourists fre-

quently cross the mountain-pass leading in 5 hours through the romantic *Riemenstaldental* into the *Muotatal*. On the left bank of the lake the Ober- and Nieder-Bauenstock now present an imposing aspect, but both are mere hills in comparison with the *Urirothstock*, which rises like some huge fortress from the blue waters to the clouds, its summit



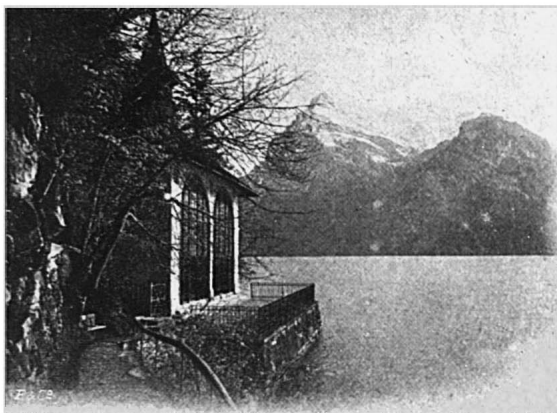
The Mythenstein



BRUNNEN AND THE MYTHEN

wreathed in eternal snow. Yonder, on the brink of the lake, lie the hamlets of

Bauen containing a monument to the composer A. Zwysig, and *Isleten*, from where a fine new carriage-road with wonderful points of view leads in one hour into the romantic Isental, a small mountain hamlet, well frequented by tourists from which the Urirothstock (9632 feet) can be ascended. Next station to come to is



Tell's Chapel

Tellsplatte, with the recently restored *Tell's Chapel*, containing fine mural paintings by Stückelberg of Basle. Tellsplatte is the spot where the Swiss hero escaped from the boat in which Gessler was conveying him to prison. It is visited year by year by the country people in solemn procession. Ten minutes' walk above the chapel, amidst luxuriant vegetation, stands a Pension and Restaurant. Enjoying the magnificent view of the Axenfluh, rising above

Tell's Chapel, of the sky-piercing Urirothstock, and of the pyramidal Bristenstock towering in front of us, in the valley of the Reuss, we now direct our course to :

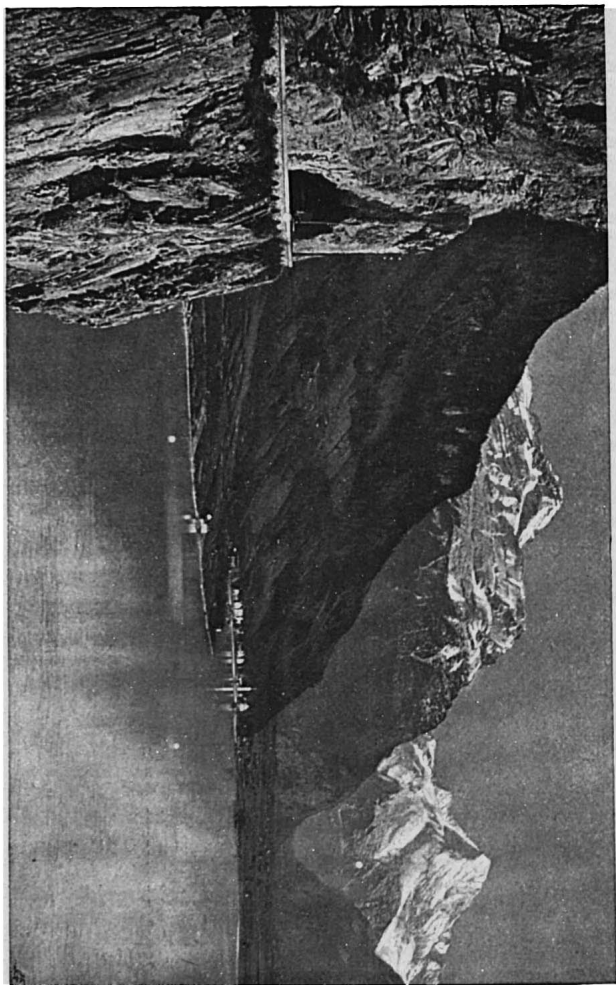
Flüelen, the port of Canton Uri, much frequented in summer-time by travellers arriving by the St. Gothard Railway with the intention of taking the steamboat here, or leaving the steamer in order to take the train to the sunny South.



Isental and Urirothstock

At Flüelen tramway to Altdorf in 9 minutes. Return fare 50 Centimes.

Our journey does not now extend so far, for after accompanying the tourist over the picturesque Lake of Lucerne it is our duty to describe some of the delightful walks, excursions, and tours that can be made from places on its banks ; for surely there is no lover of fine scenery



THE AXENSTRASSE AND FLÜELEN

who will not make at least a few excursions either on foot or by carriage on the shores of this classic lake.

Leaving the Rigi on one side for a time, we will first call the tourist's attention to the *carriage-road* along the right bank of the lake *from Weggis to Flüelen*, which may be compared to a walk through a gallery of colossal pictures.

The road from *Weggis to Vitznau* (3 miles) leads through a succession of verdant pastures and chestnut-groves, dotted with pretty cottages, and affording lovely views of the lake, its continuation from *Vitznau to Gersau*, leading high up over the promontory of the "Obere Nase," is still more romantic, commanding as it does not only the banks of the Weggis basin, but also those of the basin of Brunnen. This walk takes 1 $\frac{1}{4}$ hours, as does also that from *Gersau to Brunnen* in which we get glimpses, through the orchards, of the southern summits of the Rigi,—Scheidegg, Hochfluk and Urmiberg,—as well as of the Mythen, Fronalpstock and Seelisberg. The last section of the road along the lake shore is the celebrated **Axenstrasse**, between Brunnen and Flüelen, which for a distance of 9 miles affords truly enchanting scenery, the blue lake in the depths below, grotesquely contorted rocks rising to a dizzy height on one side of us, picturesque fir-woods, dimly lighted tunnels with openings here and there, through which we catch charming glimpses of the lake and mountains, and wonderful views of the distant Alps.

Not only in the main body of the Lake of the Forest Cantons but also in the lateral arms of Alpnach and Küssnacht such a host of beauties are discoverable that the tourist must on no account omit to visit those places.

A journey by steamboat from **Lucerne to Alpnach**, along the left bank of the lake, occupies one hour. Passing the charmingly situated houses of *Stutz* and *Hasli*, as well as the hamlet of *Langensand*, we reach the idyllic

St. Niklausen. The next station is

Kastanienbaum, and afterwards at the foot of the **Bürgenstock** :

Kehrsiten, the starting-point of the cable-railway to the heights of the **Bürgenstock**. Affording us meanwhile a magnificent view of the promontory of **Spissenegg** and the **Bay of Winkel**, the steamboat now directs its course to **Kehrsiten-Dorf**, with its pretty parsonage house and then to :

Hergiswil, one of the starting-points for tourists who wish to ascend Mount **Pilatus** on foot. An hour's walk above the village, in a beautiful and commanding situation, is the **Brunni Pension and Restaurant**. Following the **Lopperberg**, projecting far into the lake, we come to :

Stansstad, the pretty port of the Canton of **Nidwalden**, with its ancient defensive tower. From here an *electric tramway* leads in 15 minutes to **Stans**, where it connects with the **Stanserhorn Railway**, and further to **Engelberg**. Passing under the *Achereggbrücke*, which spans the lake at this point, we enter the *Lake of Alpnach*, with the **Rossberg** rising on its left bank, and soon reach :

Alpnachstad, the starting-point of the **Mount Pilatus Railway**, and like the neighbouring village of **Alpnach** a favourite summer resort.

From **Lucerne to Küsnacht**, which can be reached by steamboat in one hour, we at first have the same scenery as on our trip to **Flüelen**; soon, however, we enter the **Lake of Küsnacht** and halt at the pier of :

Meggen, a beautifully situated village with handsome country houses, trim cottages, villas, and châteaux; then, at the foot of the **Rigi**, half-hidden among chestnut-trees, comes the hamlet of :

Greppen, and further on, at the end of the lake :

Küsnacht, a large village, beautifully situated, and famous for its proximity to the *Hohle Gasse* and *Tell's*

Chapel. At the inn *Engel*, old council-chamber and relics of Goethe. A road much frequented by tourists leads in three-quarters of an hour through the "Hollow Way" to Immensee and the lovely Lake of Zug.

We may extend our excursion from Lucerne to Küssnacht by walking from the latter place along the foot of the Rigi — skirting the lake — through Greppen to Weggis (1 1/2 hours), with a wonderfully fine prospect of Pilatus, the

Stanserhorn, the Walenstöcke and the Bernese Alps, afterwards through heaving meadows and orchards.



Hohle Gasse

We shall now bid adieu for a time to the lake and turn our attention to the mountains which chiefly excite the interest of the visitor to Lucerne, namely the Rigi, Pilatus, the Stanserhorn, and the Bürgenstock.

Excursions from the Steamboat Piers on the Lake of the Four Cantons.

From Weggis to:

- Rigiblick* $\frac{1}{2}$ hr.
- Rigi-Künzeli and Kaltbad* (4701 ft.) $2\frac{1}{4}$ hr.
- Rigi-Kulm* (5905 ft.) $3\frac{1}{2}$ hr.
- Hertenstein* 20 min.
- Greppen* $1\frac{1}{2}$ hr.
- Küssnacht* $1\frac{1}{2}$ hr.
- Lützelau* $\frac{1}{2}$ hr.
- Vitznau* 1 hr.

From Vitznau to:

- Pension Weissenfluh* $1\frac{1}{2}$ hr.
- Grubisbalm* $1\frac{1}{2}$ hr.
- Rigi-Kulm* (5905 ft.) 3 hr.
- Vitznauerstock* (4770 ft.) $2\frac{1}{2}$ hr.
- Gersau* $1\frac{1}{2}$ hr.
- Lützelau* $\frac{1}{2}$ hr.
- Flora Alpina* 20 min.

From Gersau to:

- Rigi-Scheidegg* (5406 ft.) $3\frac{1}{2}$ hr.
- Rigi-Hochfluh* (5554 ft.) $3\frac{1}{2}$ hr.
- Kindlimordkapelle* $\frac{1}{2}$ hr.
- Brunnen* $1\frac{1}{2}$ hr.
- Vitznau* $1\frac{1}{2}$ hr.

From Brunnen to:

- Rütli* (by boat) $\frac{1}{2}$ hours.
- Morschach* (2155 ft.) 1 hr.
- Azenfels* (2067 ft.) $\frac{1}{2}$ hr.
- Azenstein* (2460 ft.) $1\frac{1}{2}$ hr.
- Stoos* (4232 ft.) 3 hr.
- Fronalpstock* (6305 ft.) $4\frac{1}{2}$ hr.
- Muotatal* (*Suwarow Bridge*) $1\frac{1}{2}$ hr.
- Bienenstalden* (3408 ft.) above
Sisikon $2\frac{1}{2}$ hr.

Tellsplatte $1\frac{1}{2}$ hr.

Flüelen $2\frac{3}{4}$ hr.

Island of Schwanau (*Lake of Lowerz*),
by the *St. Gothard Railway* in
12 min. to *Schwoyz-Seeoen* and
from *Seeoen* in 25 min. by
rowing-boat.
Seelisberg via *Rütli* or *Treib* 2 hr.

From Flüelen to:

- Aldorf* (1476 ft.) $\frac{1}{2}$ hr.
- Bürglen* (1811 ft.) $1\frac{1}{2}$ hr.
- Isental* (2542 ft.) 3 hr.
- Tellsplatte* 1 hr.

From Beckenried to:

- Schöneck* (2313 ft.) 1 hr.
- Seelisberg* $2\frac{1}{2}$ hr.
- Emmetten* (2592 ft.) $1\frac{1}{2}$ hr.
- Buochs* $\frac{1}{2}$ hr.
- Niederbauen* (6315 ft.) 4 hr.
- Buochserhorn* (5935 ft.) $3\frac{1}{2}$ hr.

From Buochs to:

- Stans* $1\frac{1}{2}$ hr.
- Stansstad* 2 hr.
- Bürgenstock-Hammetschwand*
(3720 ft.) 2 hr.
- Buochserhorn* (5935 ft.) $3\frac{1}{2}$ hr.

From Stansstad to:

- Kehrsiten* (by boat) $\frac{1}{2}$ hr.
- Bürgenstock* 2 hr.
- Rotzberg* $\frac{1}{2}$ hr.
- Stans* $\frac{1}{2}$ hr. (tramway $\frac{1}{4}$ hr.)
- Stanserhorn* (6233 ft.) 4 hr.

From Treib-Seellsberg to:

Rütli (by rowing-boat) 1 hr.
Seelisberg (2772 ft.) 1 hr.
Kurhaus Sonnenberg-Seelisberg 1 $\frac{1}{2}$ hr.
Hotel Bellevue, Seelisberg 1 hr.

From Kurhaus

Sonnenberg-Seellsberg to:

Schwendiſtuh 20 min.
Emmetten 1 $\frac{1}{2}$ hr.
Künzeli 25 min.
Bauen 1 $\frac{1}{2}$ hr.
Isental 2 hr.
Isleten 1 hr.
Rütli 40 min.
Beroldingen $\frac{1}{2}$ hr.
Niederbauen 3 $\frac{1}{2}$ hr.

From Alpnachstad to:

Aemsigenalp (4429 ft.) 2 hr.
Pilatus-Kulm (6784 ft.) 4 $\frac{1}{4}$ hr.
Renggpas-Brunni-Hergiswil 3 hr.

From Hergiswil to:

Brunni 1 hr.
Klimsenhorn (8266 ft.) 3 $\frac{1}{4}$ hr.
Pilatus-Kulm (6784 ft.) 4 $\frac{1}{4}$ hr.
Stansstad $\frac{1}{2}$ hr.
Brunni-Renggpas-Alpnachstad 3 hr.

From Küssnacht to:

Weggis via Greppen 1 $\frac{1}{4}$ hr.
Seebodenalp (3372 ft.) 1 $\frac{1}{2}$ hr.
Rigi-Kulm 3 hr.
Isle of Schwanau (Rail from Immensee
to Goldau) 2 hr.
Hohle Gasse, Tell's Chapel, Immensee
 $\frac{3}{4}$ hr.
Buonos Castle 1 hr.
Michaelskreuz 1 $\frac{1}{2}$ hr.
Meggen 1 hr.



STEAMBOAT FARES.

LUCERNE TO	Single fare		Abonne- ment Nr.	Return fares		Bicycles	Dogs
	I.	II.		I.	II.		
Alpnach	1. 80	— . 90	7	2. 70	1. 30	— . 75	— . 50
Bauen	3. 35	2. 30	18	4. 70	3. 15	1. 20	— . 50
Beckenried	2. 40	1. 20	10	3. 60	1. 80	— . 75	— . 50
Brunnen	2. 95	2. 10	15	4. 10	2. 70	1. —	— . 50
Buochs	2. 40	1. 20	10	3. 60	1. 80	— . 75	— . 50
Flüelen	3. 80	2. 70	20	5. 30	3. 55	1. 20	— . 50
Gersau	2. 70	1. 40	12	4. —	2. 30	1. —	— . 50
Greppen	1. 50	— . 70	6	2. 30	1. —	— . 50	— . 30
Hergiswil	1. 10	— . 60	5	1. 60	— . 90	— . 50	— . 30
Hertenstein	1. 20	— . 60	4	1. 80	— . 90	— . 30	— . 30
Hinter-Meggen	1. 15	— . 60	5	1. 75	— . 75	— . 30	— . 30
Isleten	3. 50	2. 30	18	5. —	3. 15	1. 20	— . 50
Kastanienbaum	1. —	— . 50	4	1. 50	— . 80	— . 30	— . 30
Kehrsiten	1. —	— . 50	4	1. 50	— . 80	— . 50	— . 30
Küssnacht	1. 80	— . 90	7	2. 65	1. 15	— . 50	— . 30
Rotzloch	1. 60	— . 80	6	2. 40	1. 20	— . 75	— . 50
Rütli	3. 10	2. —	16	4. 50	3. —	1. —	— . 50
Seeburg	— . 40	— . 30	2	— . 60	— . 50	— . 30	— . 30
Sisikon	3. 35	2. 40	17	4. 70	3. 15	1. —	— . 50
Stansstad	1. 40	— . 70	5	2. 10	1. —	— . 75	— . 30
Tellsplatte	3. 50	2. 50	18	5. —	3. 45	1. 20	— . 50
Treib (Seelisberg)	2. 80	1. 60	14	4. —	2. 50	1. —	— . 50
Vitznau	2. —	1. —	8	3. —	1. 50	— . 50	— . 30
Vorder-Meggen	1. 15	— . 60	5	1. 75	— . 75	— . 30	— . 30
Weggis	1. 60	— . 80	6	2. 40	1. 20	— . 50	— . 30

Book of 100 Coupons, Francs 12.50 (First class only).
 The figures in the column headed "Abonnement" indicate how many Nos. it requires to pay the fare to a given place.